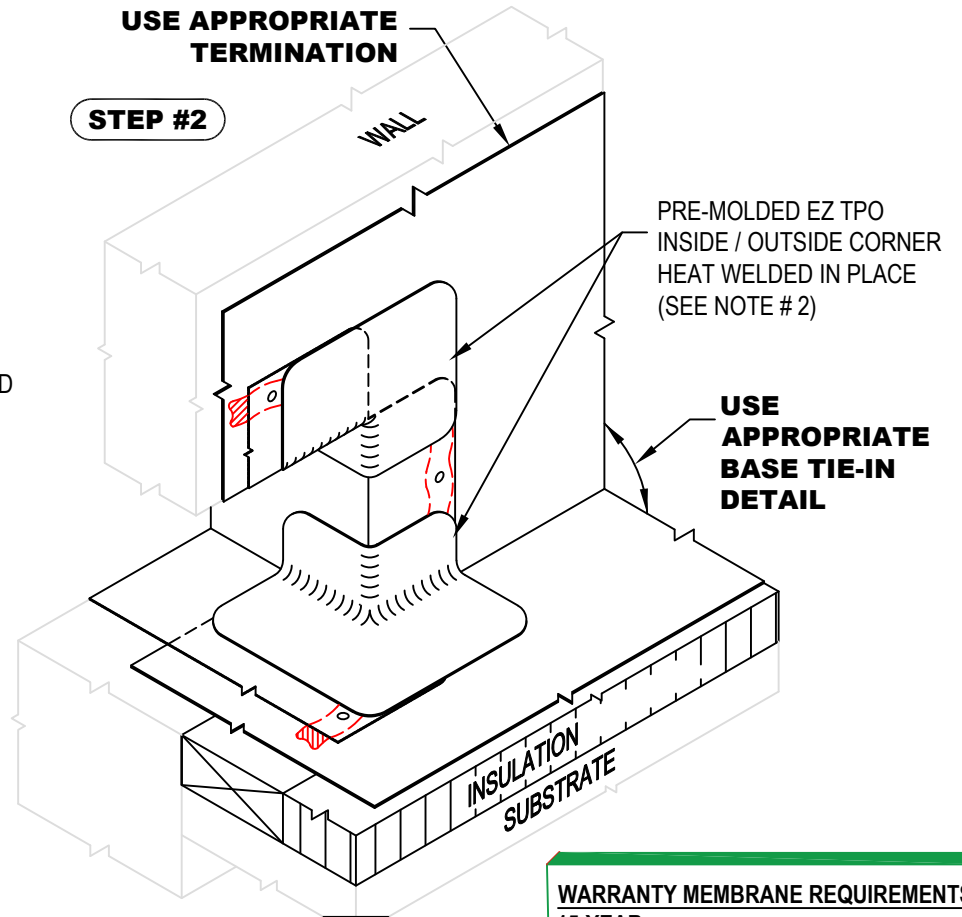
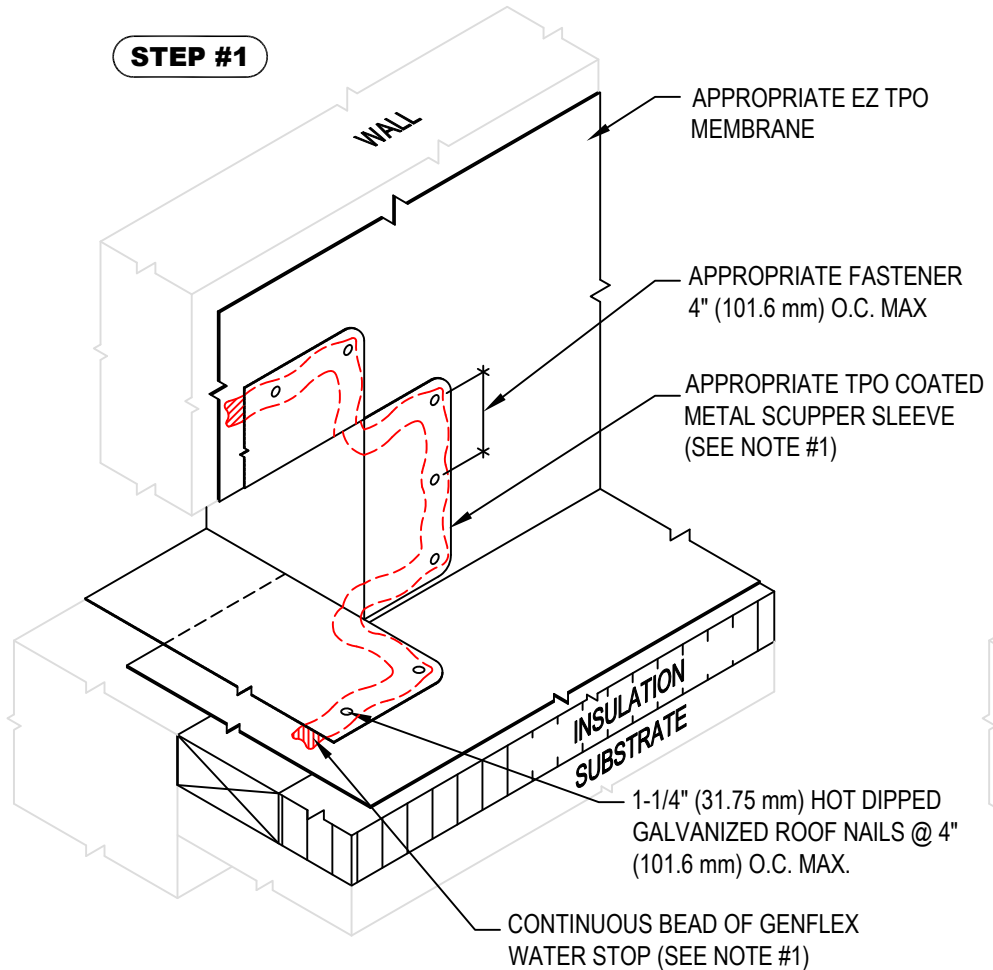


NOTE:

- STEP #1 - APPLY CONTINUOUS BEAD OF GENFLEX WATER STOP CENTERED UNDER FASTENERS. ROUND ALL METAL CORNERS AND FASTEN METAL SCUPPER WITH APPROPRIATE FASTENERS.
- STEP #2 - STRIP IN CORNERS OF SCUPPER WITH PRE-MOLDED EZ TPO INSIDE / OUTSIDE CORNERS. EZ TPO NON-REINFORCED FLASHING MAY BE USED IN LIEU OF PRE-MOLDED CORNERS.



WARRANTY MEMBRANE REQUIREMENTS:
15-YEAR
 TPO - 45 MIL
20-YEAR
 TPO - 60 MIL



**THRU WALL SCUPPER WITH EZ TPO COATED METAL
 INSTALLATION STEPS 1 & 2**

MATERIAL: EZ TPO ACCEPTABLE SYSTEMS: ALL

MAXIMUM WARRANTY: 20 Years

ISSUE / REVISION DATE:
 04/20/2026

DETAIL NO.
EZT-S-05A