

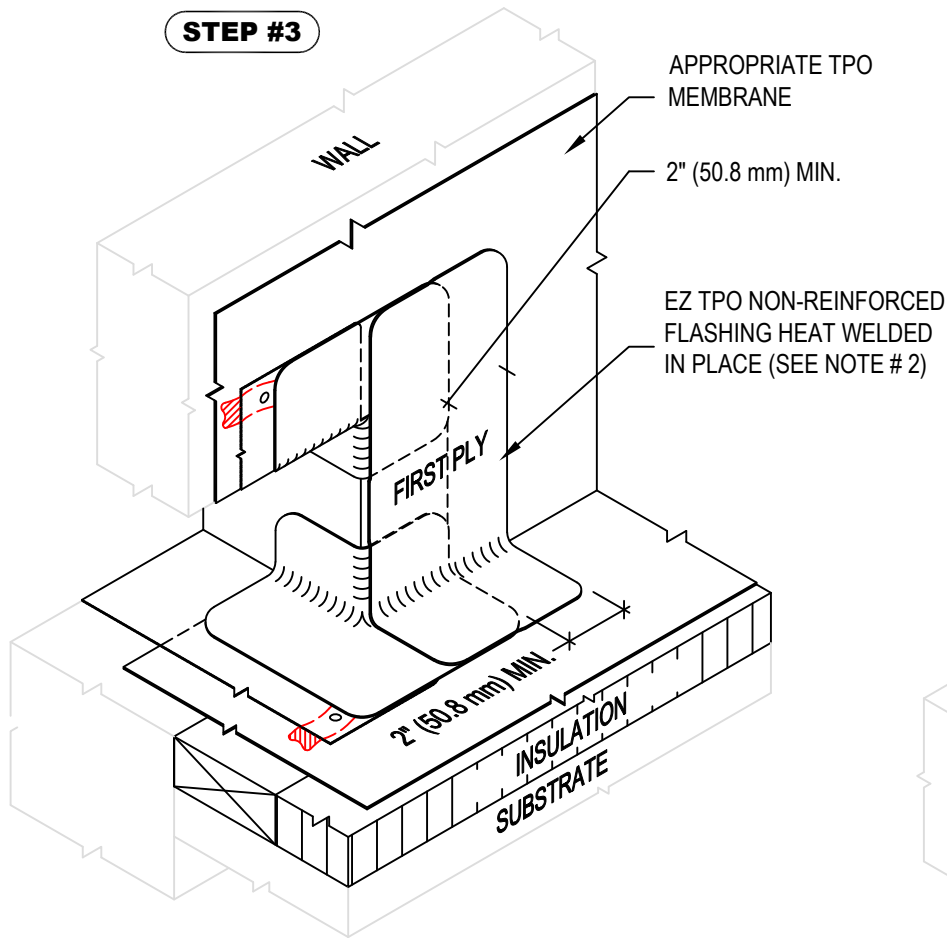
NOTE:

1. REFER TO THE GENFLEX™ WEBSITE FOR MOST CURRENT INFORMATION.
2. STEP #3 - STRIP IN VERTICAL EDGES OF SCUPPER AS INDICATED WITH EZ TPO FLASHING (UNSUPPORTED) AS REQUIRED.
3. STEP #4 - STRIP IN TOP AND BOTTOM EDGES OF SCUPPER AS INDICATED WITH EZ TPO NON-REINFORCED FLASHING OR EZ TPO MEMBRANE AS REQUIRED.

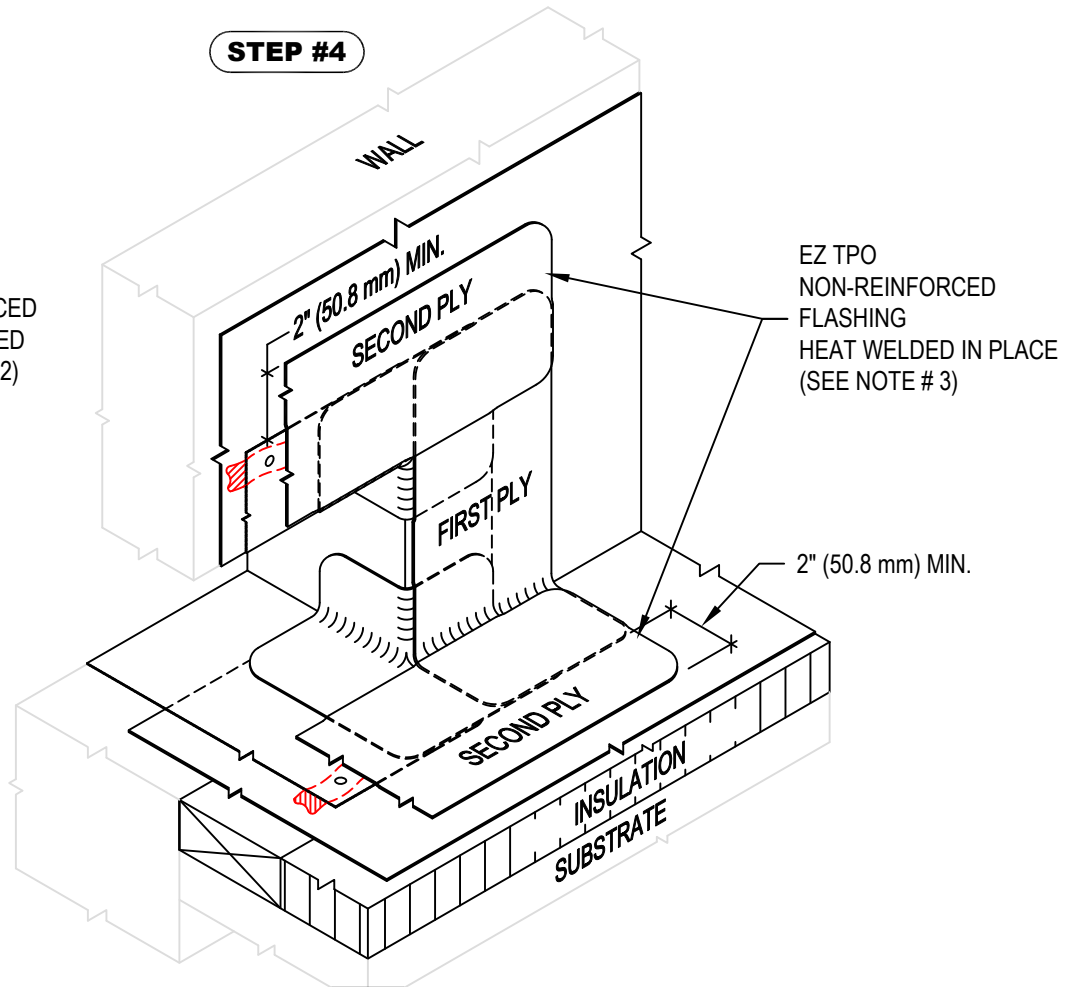
WARRANTY MEMBRANE REQUIREMENTS:

15-YEAR
TPO - 45 MIL
20-YEAR
TPO - 60 MIL

STEP #3



STEP #4



**THRU WALL SCUPPER WITH EZ TPO COATED METAL
INSTALLATION STEPS 3 & 4**

MATERIAL: EZ TPO

ACCEPTABLE SYSTEMS: ALL

MAXIMUM WARRANTY: 20 Years

ISSUE / REVISION
DATE:

04/20/2026

DETAIL NO.

EZT-S-05B

NOT TO SCALE

GENFLEX: (800) 443-4272 www.genflex.com