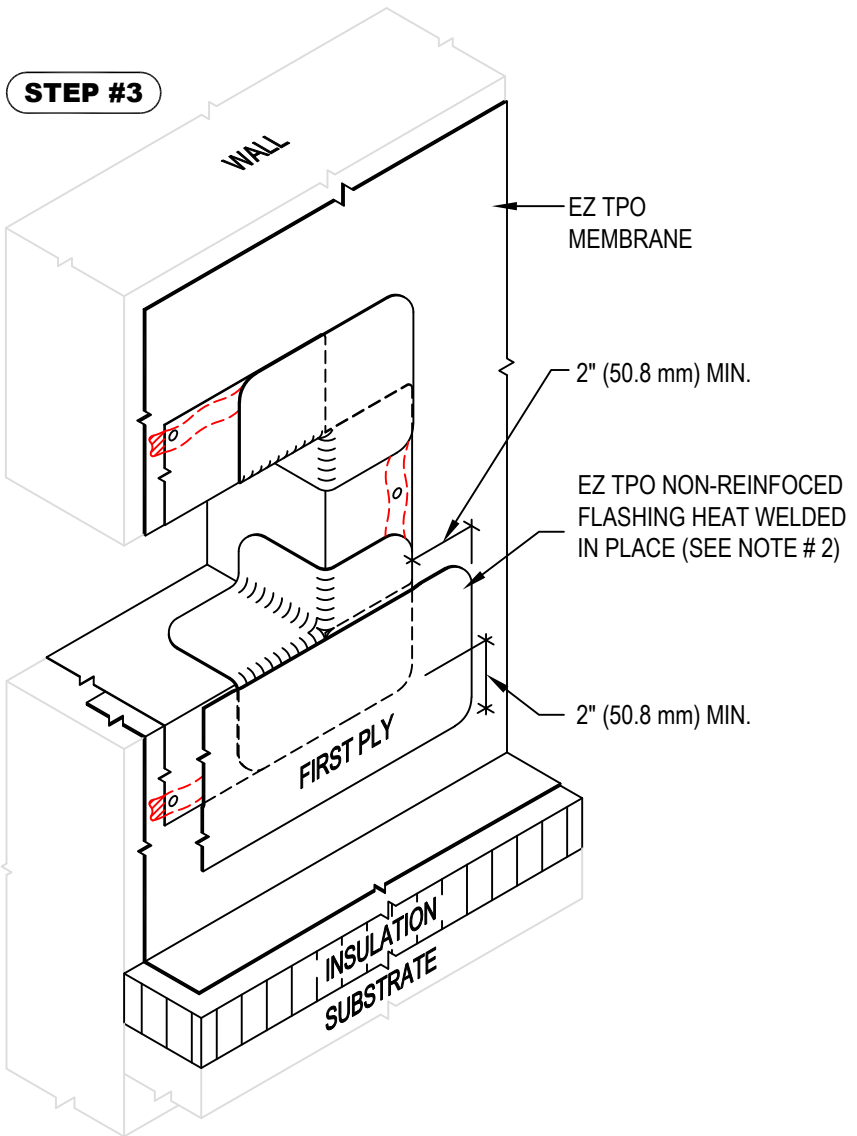
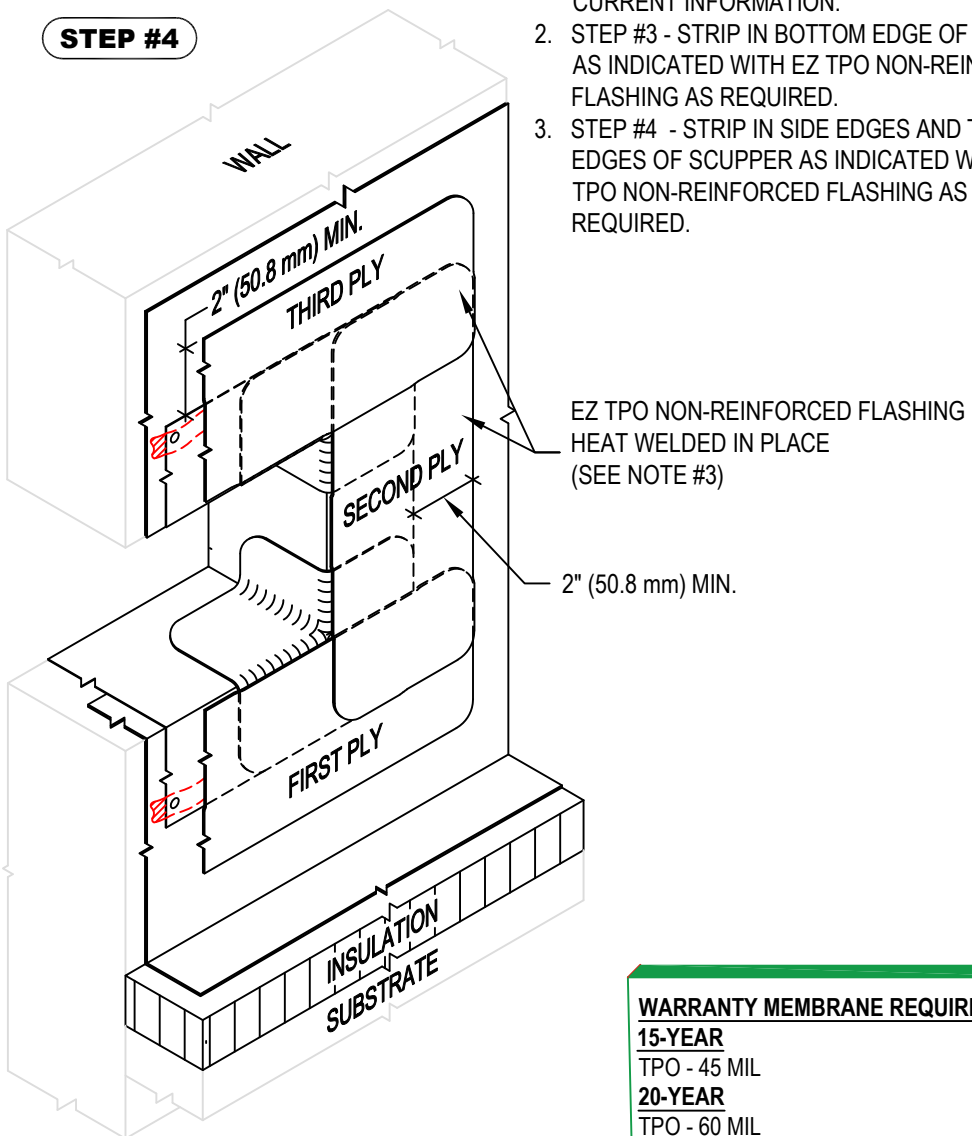


STEP #3



STEP #4



- NOTE:
1. REFER TO THE GENFLEX™ WEBSITE FOR MOST CURRENT INFORMATION.
 2. STEP #3 - STRIP IN BOTTOM EDGE OF SCUPPER AS INDICATED WITH EZ TPO NON-REINFORCED FLASHING AS REQUIRED.
 3. STEP #4 - STRIP IN SIDE EDGES AND TOP EDGES OF SCUPPER AS INDICATED WITH EZ TPO NON-REINFORCED FLASHING AS REQUIRED.

WARRANTY MEMBRANE REQUIREMENTS:
15-YEAR
 TPO - 45 MIL
20-YEAR
 TPO - 60 MIL



**OVERFLOW THRU-WALL SCUPPER WITH EZ TPO COATED METAL
 INSTALLATION STEPS 3 & 4**

MATERIAL: EZ TPO

ACCEPTABLE SYSTEMS: ALL

MAXIMUM WARRANTY: 20 Years

ISSUE / REVISION DATE:

04/20/2026

DETAIL NO.

EZT-S-06B

NOT TO SCALE