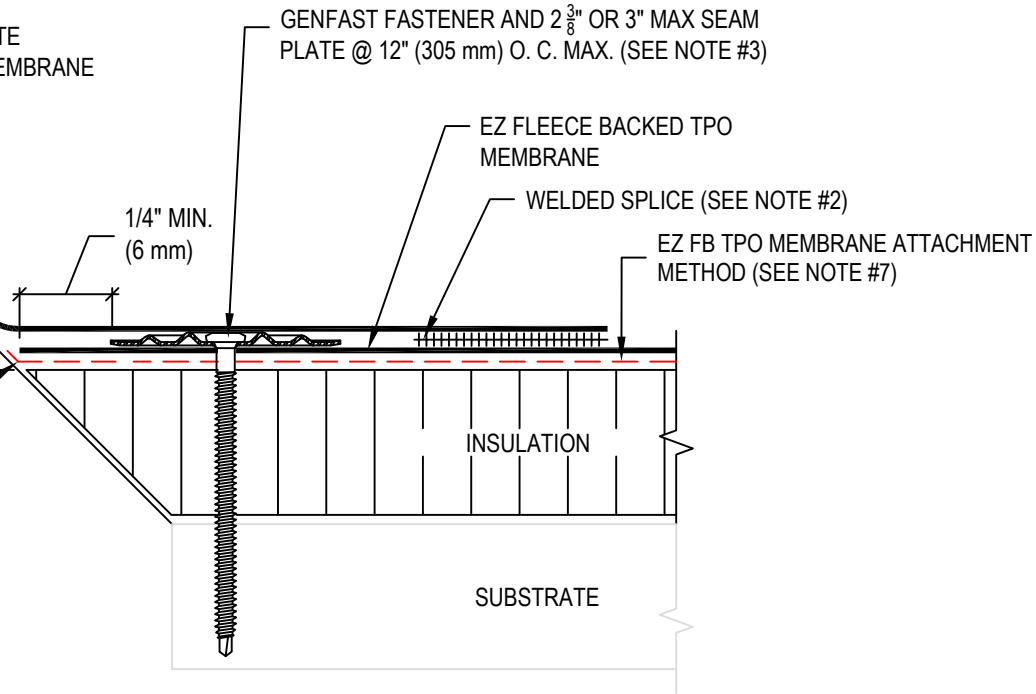
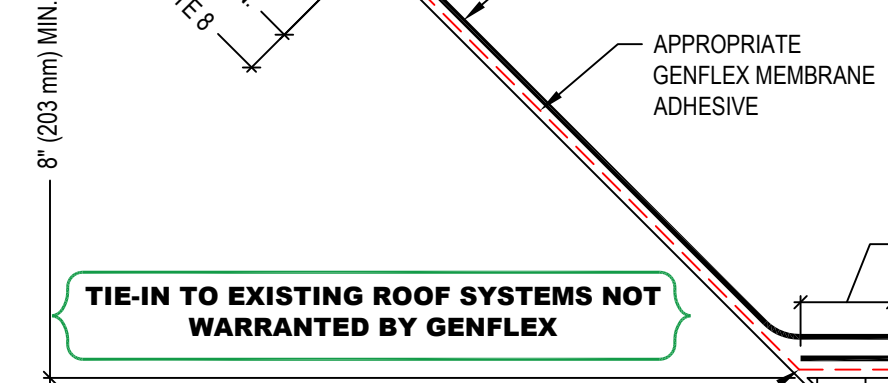


- NOTE:
1. REFER TO THE GENFLEX™ WEBSITE FOR MOST CURRENT INFORMATION.
  2. REFER TO DETAIL EZT-FB-LS-01 OR EZT-FB-LS-03 FOR WELD WIDTH.
  3. MAXIMUM 10" (254 mm) LONG FASTENERS. (NOTE: WOOD BLOCKING MAY BE SUBSTITUTED FOR INSULATION TO REDUCE FASTENER LENGTH REQUIREMENT).
  4. IN CASE OF OBSTRUCTION REFER TO DETAIL EZT-FB-BT-13 & EZT-FB-BT-14.
  5. REFER TO EZT-FB-BT-9 & EZT-FB-BT-10 FOR MEMBRANE SECUREMENT AT CORNERS.
  6. WHEN REINFORCEMENT OF TPO MEMBRANE IS EXPOSED, REFER TO EZT-LS-14 FOR CUT EDGE SEALANT APPLICATION.
  7. REFER TO GENFLEX PDS SHEETS AND APPROPRIATE GUIDES FOR LIST OF COMPATIBLE SUBSTRATES AND APPLICABLE ATTACHMENT METHODS.
  8. GENFLEX DOES NOT WARRANT TIE-INS TO OTHER ROOFING SYSTEMS. THIS DETAIL INCLUDES TERMINATION OF THE GENFLEX SYSTEM ONLY.



**TIE-IN TO EXISTING ROOF SYSTEMS NOT WARRANTED BY GENFLEX**

WHEN ASPHALT IS USED, STOP ASPHALT APPLICATION SHORT OF WALL TO ENSURE WALL SUBSTRATE STAYS FREE OF ASPHALT

**WARRANTY MEMBRANE REQUIREMENTS:**  
**15-YEAR**  
 TPO - 45 MIL  
**20-YEAR**  
 TPO - 60 MIL



TIE-IN AT SHINGLES	
MATERIAL: EZ FLEECE BACKED TPO	ACCEPTABLE SYSTEMS: ALL

MAXIMUM WARRANTY: 20 Years	
ISSUE / REVISION DATE: 04/20/2026	DETAIL NO. EZT-FB-BT-04
NOT TO SCALE	