

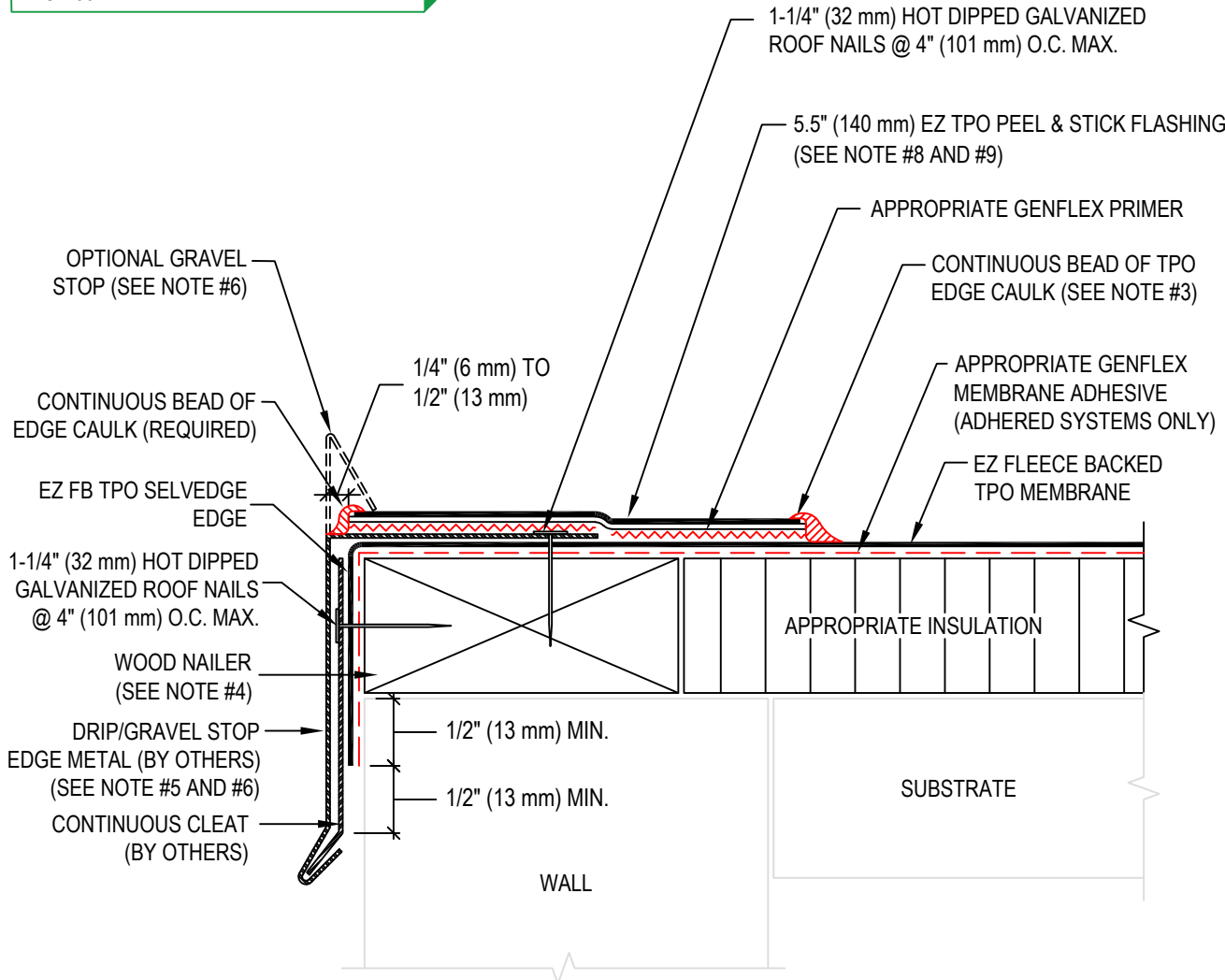
WARRANTY MEMBRANE REQUIREMENTS:

15-YEAR

TPO - 45 MIL

20-YEAR

TPO - 60 MIL



NOTE:

1. REFER TO THE GENFLEX™ WEBSITE FOR THE MOST CURRENT INFORMATION.
2. INSTALL METAL WORK TO MANUFACTURER'S REQUIREMENTS OR SMACNA RECOMMENDATIONS.
3. EZ TPO EDGE CAULK IS REQUIRED ALONG ENTIRE UPSLOPE EDGE OF PEEL & STICK FLASHING WHEN ROOF SLOPE IS 1" (25 mm) PER FOOT OR GREATER.
4. WOOD NAILER MUST BE INSTALLED TO MEET APPLICABLE BUILDING CODES.
5. FLANGE OF METAL MUST BE FULLY SUPPORTED BY WOOD AND TERMINATED AT LEAST 1/2" (13 mm) FROM EDGE OF WOOD.
6. ON BALLASTED ROOFS, GRAVEL STOP HEIGHT MUST MEET OR EXCEED BALLAST OR PAVER HEIGHT (2" (51 mm) MIN. ABOVE ROOF SURFACE).
7. IF THE FLANGE OF METAL EDGE IS NOT COMPLETELY COVERED WITH PEEL & STICK FLASHING. THEN AN ADDITIONAL PIECE OF PEEL & STICK FLASHING SHALL BE INSTALLED AT ALL METAL SPLICES. REFER TO EZT-RE-27.
8. TO ENSURE FORMABILITY, SLIGHTLY HEAT-FORM THE SURFACE OF TPO PEEL & STICK PRODUCTS AT STEP-OFFS AND ANGLE CHANGES.
9. REFER TO EZT-RE-24 THROUGH EZT-RE-27 FOR TPO PEEL & STICK FLASHING EDGE DETAILS.



EZ FLEECE BACKED TPO MEMBRANE ROOF EDGE WITH FASCIA METAL (BY OTHERS)

MAXIMUM WARRANTY: 20 Years

ISSUE / REVISION DATE:

04/20/2026

DETAIL NO.

EZT-FB-RE-04

MATERIAL: EZ FLEECE BACKED TPO

ACCEPTABLE SYSTEMS: ALL

NOT TO SCALE

GENFLEX: (800) 443-4272 www.genflex.com