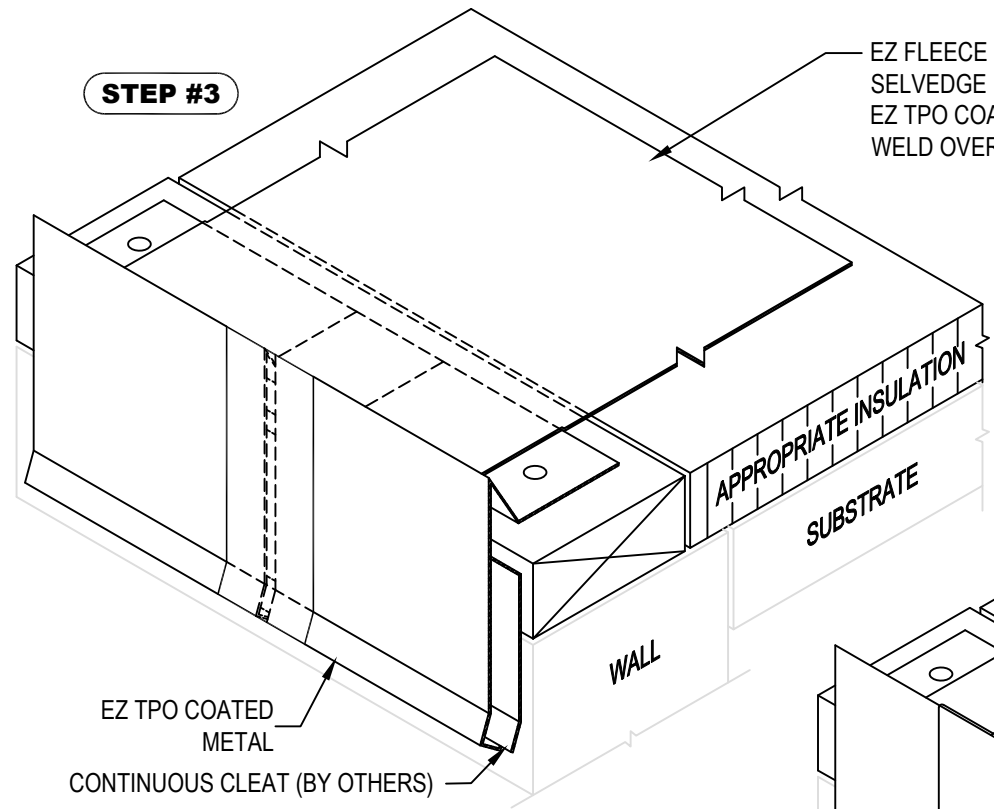


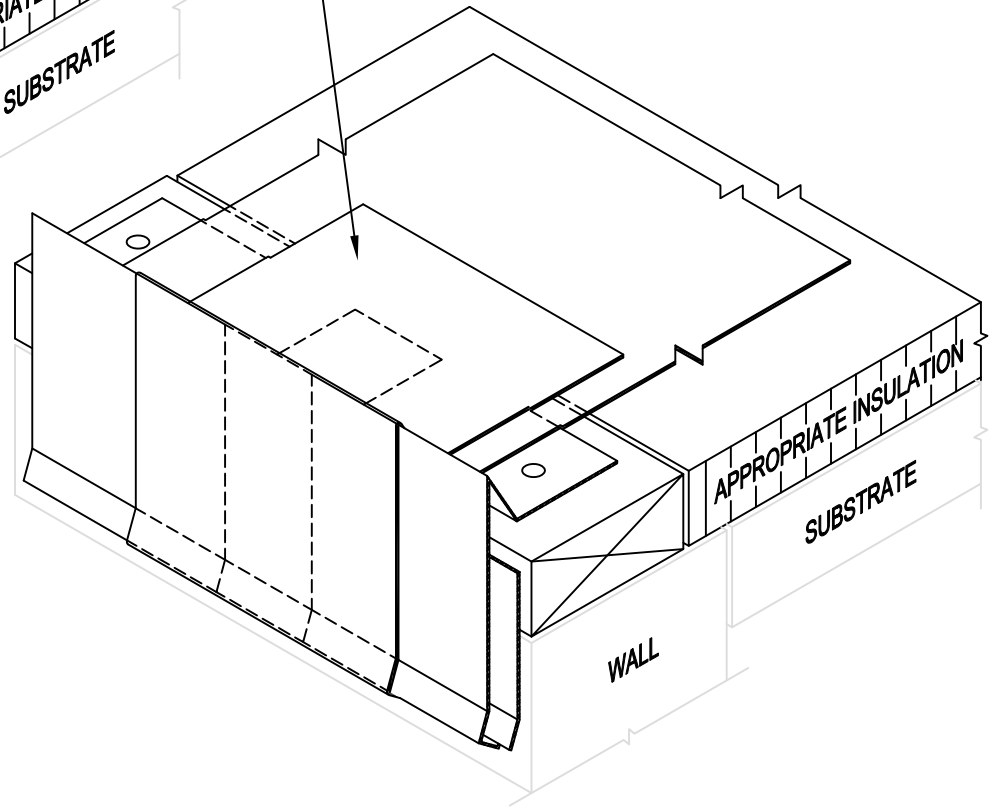
**STEP #3**



EZ FLEECE BACKED TPO MEMBRANE SELVEDGE EDGE HEAT WELDED TO EZ TPO COATED METAL (DO NOT WELD OVER TAPE)

6" (152 MM) WIDE (MIN.) STRIP OF EZ TPO NON-REINFORCED FLASHING HEAT WELDED OVER JOINT AND DOWN FACE (DO NOT WELD OVER TAPE)

**STEP #4**



- NOTE:
1. REFER TO THE GENFLEX™ WEBSITE FOR THE MOST CURRENT INFORMATION.
  2. REFER TO DETAIL EZT-LS-01 OR EZT-LS-02 FOR WELD WIDTH.
  3. WHEN REINFORCEMENT OF TPO MEMBRANE IS EXPOSED, REFER TO EZT-LS-14 FOR CUT EDGE SEALANT APPLICATION.

**WARRANTY MEMBRANE REQUIREMENTS:**  
**15-YEAR**  
 TPO - 45 MIL  
**20-YEAR**  
 TPO - 60 MIL

|   |  |                         |                                      |                             |
|---|--|-------------------------|--------------------------------------|-----------------------------|
|   | <b>ROOF EDGE WITH EZ TPO COATED METAL WITH EZ FB TPO MEMBRANE SELVEDGE EDGE AT SPLICE - INSTALLATION STEPS 3 &amp; 4</b> |                         | MAXIMUM WARRANTY: 20 Years           |                             |
|   | MATERIAL: EZ FLEECE BACKED TPO   | ACCEPTABLE SYSTEMS: ALL | ISSUE / REVISION DATE:<br>04/20/2026 | DETAIL NO.<br>EZT-FB-RE-05B |
| GENFLEX: (800) 443-4272 www.genflex.com |  |                         | NOT TO SCALE                         |                             |