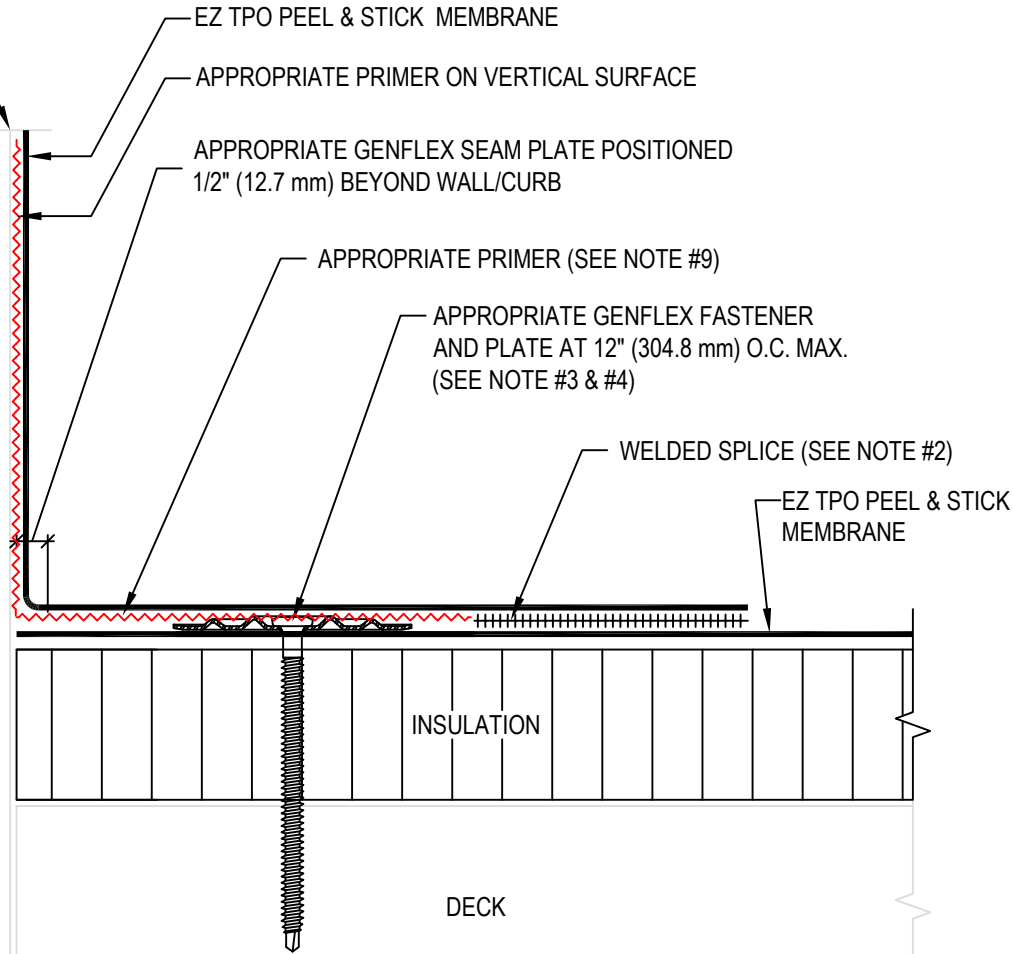


**USE APPROPRIATE TERMINATION**



**NOTE:**

1. REFER TO THE GENFLEX™ WEBSITE FOR MOST CURRENT INFORMATION.
2. REFER TO DETAIL EZT-PS-LS-01 OR EZT-PS-LS-02 FOR WELD WIDTH.
3. MAXIMUM 10" (254 mm) LONG FASTENERS. (NOTE: WOOD BLOCKING MAY BE SUBSTITUTED FOR INSULATION TO REDUCE FASTENER LENGTH REQUIREMENT).
4. IN CASE OF OBSTRUCTION REFER TO DETAIL EZT-PS-BT-05.
5. REFER TO EZT-PS-BT-16 & EZT-PS-BT-17 FOR MEMBRANE SECUREMENT AT CORNERS.
6. WHEN REINFORCEMENT OF TPO MEMBRANE IS EXPOSED, REFER TO EZT-PS-LS-04 FOR CUT EDGE SEALANT APPLICATION.
7. REFER TO GENFLEX PDS SHEETS AND APPLICATION GUIDES FOR LIST OF COMPATIBLE SUBSTRATES WITH EZ TPO PEEL & STICK MEMBRANE.
8. STANDARD EZ TPO MEMBRANE WITH APPROPRIATE MEMBRANE ADHESIVE OR EZ TPO PEEL & STICK MEMBRANE MAY BE USED AS WALL FLASHING.
9. APPROPRIATE PRIMERS INCLUDE GENFLEX CLEAR PRIMER AND GENFLEX CLEAR LVOC PRIMER.
10. REFER TO EZT-PS-BT-08 & EZT-PS-BT-09 FOR MEMBRANE SECUREMENT AT CORNERS.



**BASE TIE-IN WITH GENFAST FASTENER AND PLATE FASTENED TO DECK**

MATERIAL: EZ TPO P&S

ACCEPTABLE SYSTEMS: ADHERED

MAXIMUM WARRANTY: 20 Years

ISSUE / REVISION DATE:

04/20/2026

DETAIL NO.

EZT-PS-BT-01

NOT TO SCALE

GENFLEX: (800) 443-4272 www.genflex.com