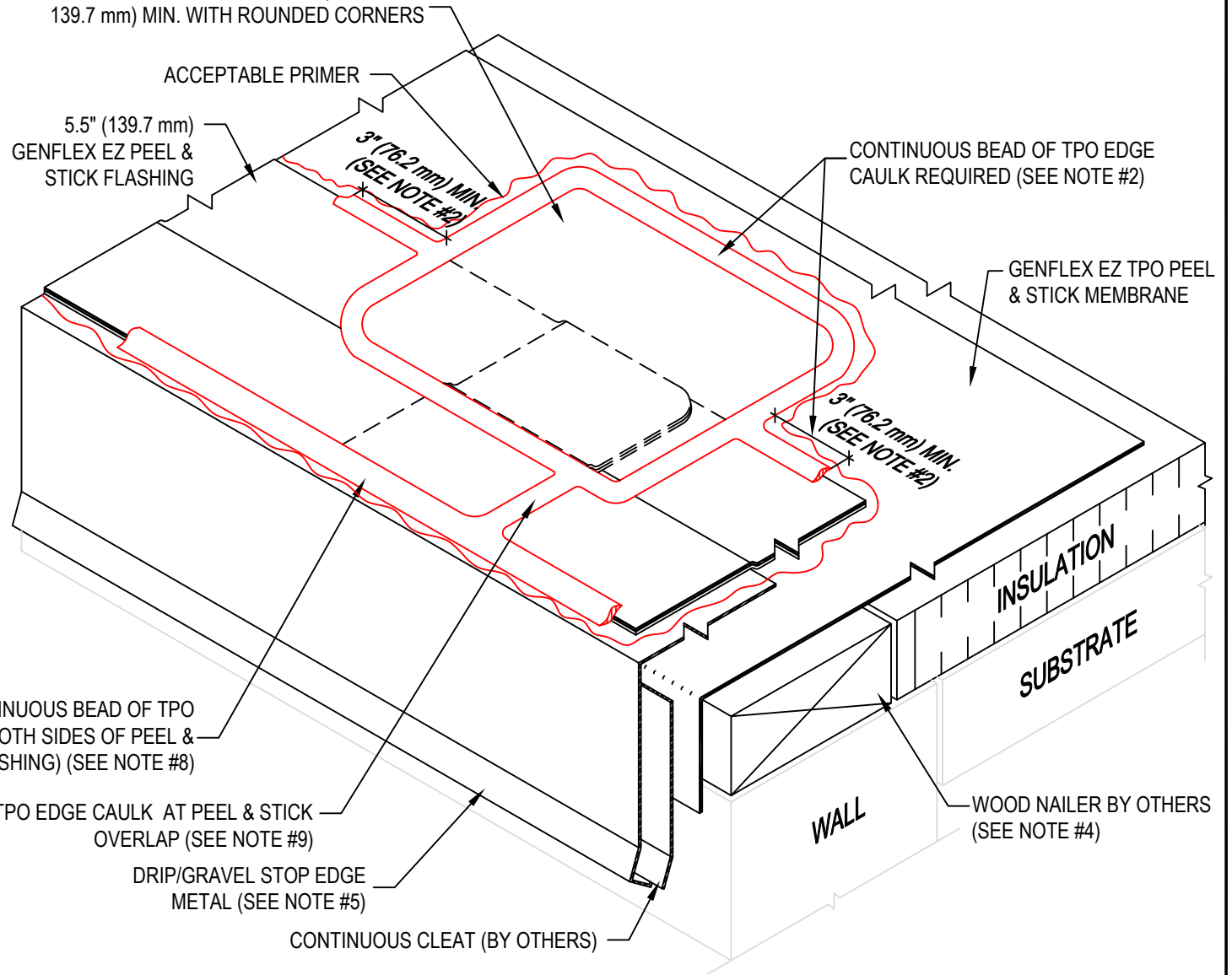


NOTE:

1. REFER TO THE GENFLEX™ WEBSITE FOR THE MOST CURRENT INFORMATION.
2. REQUIRED - APPLY TPO EDGE CAULK ALONG THE ENTIRE PERIMETER OF THE T-JOINT COVER AND EXTEND A MIN. 3" (76.2 mm) PAST OVERLAPS IN EACH DIRECTION.
3. APPLY GENFLEX WATERSTOP BETWEEN SHEET METAL JOINTS.
4. WOOD NAILER MUST BE INSTALLED TO MEET APPLICABLE BUILDING CODES.
5. FLANGE OF METAL MUST BE FULLY SUPPORTED BY WOOD AND TERMINATED AT LEAST 1/2" (12.7 mm) FROM EDGE OF WOOD.
6. 5.5" (139.7 mm) GENFLEX EZ PEEL & STICK FLASHING MUST EXTEND TO WITHIN 1/4" (6.35 mm) OF THE METAL EDGE
7. PRIMER REQUIRED ON VERTICAL SURFACES WHERE TPO P&S WILL BE APPLIED.
8. OPTIONAL - TPO EDGE CAULK MAY BE APPLIED ALONG ENTIRE PERIMETER OF PEEL & STICK FLASHING (SEE NOTE #2).
9. REQUIRED - APPLY TPO EDGE CAULK SEALANT AT ALL QUICK SEAM LAPS.

GENFLEX TPO T-JOINT COVER OR GENFLEX EZ PEEL & STICK FLASHING 5.5" x 5.5" (139.7 mm x 139.7 mm) MIN. WITH ROUNDED CORNERS



OPTIONAL CONTINUOUS BEAD OF TPO EDGE CAULK (ON BOTH SIDES OF PEEL & STICK FLASHING) (SEE NOTE #8)

TPO EDGE CAULK AT PEEL & STICK OVERLAP (SEE NOTE #9)

DRIP/GRAVEL STOP EDGE METAL (SEE NOTE #5)

CONTINUOUS CLEAT (BY OTHERS)



ROOF EDGE WITH GENFLEX EZ PEEL & STICK FLASHING AT END SPLICE OVERLAP

MATERIAL: EZ TPO P&S

ACCEPTABLE SYSTEMS: ADHERED

GENFLEX: (800) 443-4272 www.genflex.com

MAXIMUM WARRANTY: 20 Years

ISSUE / REVISION DATE:

04/20/2026

NOT TO SCALE

DETAIL NO.

EZT-PS-RE-08