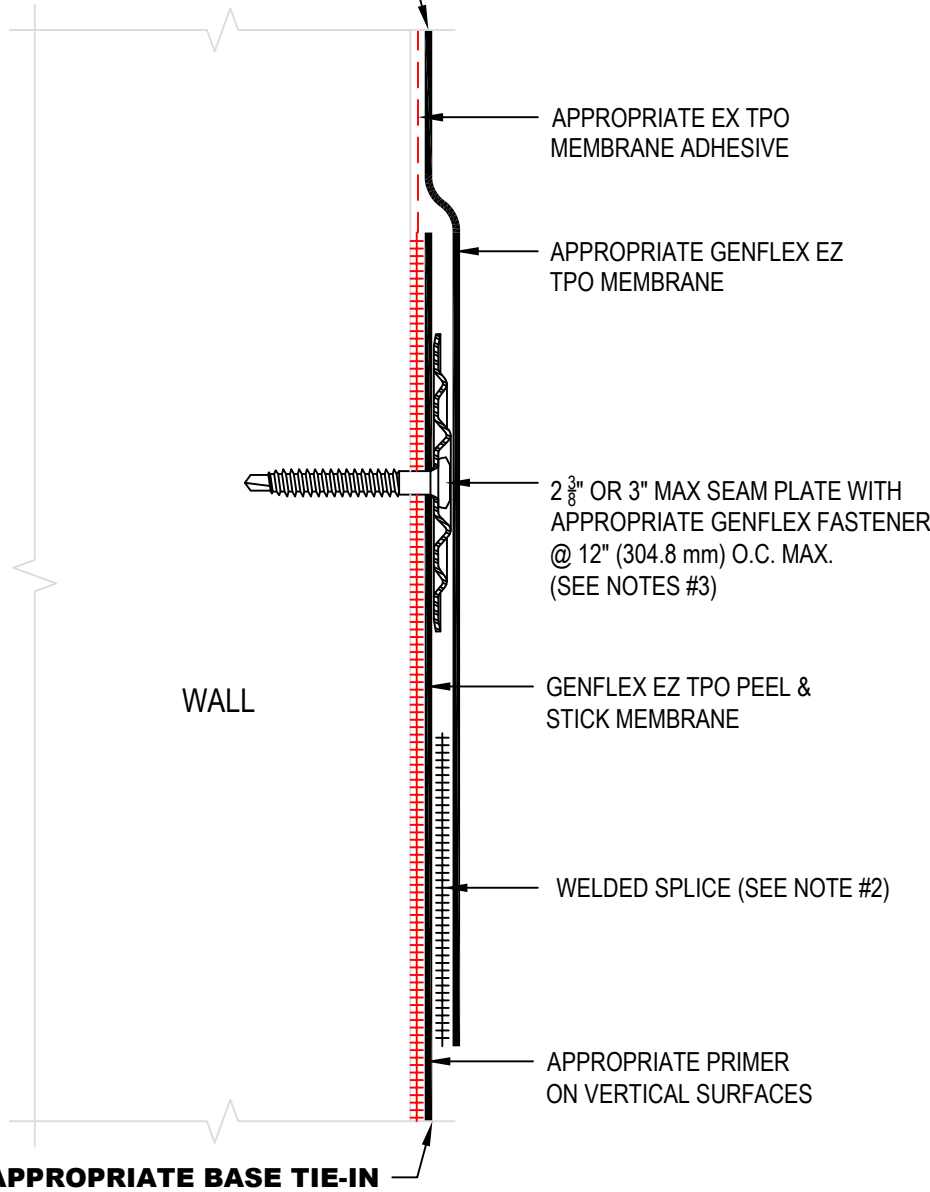


**USE APPROPRIATE TERMINATION**



**NOTE:**

1. REFER TO THE GENFLEX™ WEBSITE FOR MOST CURRENT INFORMATION.
2. REFER TO DETAIL EZT-PS-LS-01 FOR WELD WIDTH.
3. GENFLEX BATTEN STRIP MAY BE USED IN LIEU OF SEAM PLATES. POLYMER OR METAL BATTEN STRIP ACCEPTABLE FOR WOOD OR METAL SUBSTRATE. METAL BATTEN MUST BE USED WITH MASONRY SUBSTRATE.
4. IF INTERMEDIATE ATTACHMENT IS REQUIRED, COMPLETE AS FOLLOWS:
  - UP TO 5' (1.53 m) WALL HEIGHT- NONE REQUIRED
  - 5' (1.53 m) - 10' (3 m) WALL HEIGHT - ONE ATTACHMENT AT 1/2 THE WALL HEIGHT
  - ABOVE 10' (3 m) - ONE ATTACHMENT EVERY 3' (0.91 m)
5. WHEN REINFORCEMENT OF TPO MEMBRANE IS EXPOSED, REFER TO EZT-PS-04 FOR CUT EDGE SEALANT APPLICATION.
6. APPROVED PRIMER REQUIRED ON ALL VERTICAL SURFACES WHEN EZ TPO PEEL & STICK MEMBRANE IS USED FOR FLASHING.
7. REFER TO TPO APPLICATION GUIDE FOR ACCEPTABLE FLASHING SUBSTRATES.

WALL

**USE APPROPRIATE BASE TIE-IN**



**INTERMEDIATE WALL FLASHING ATTACHMENT WITH WELDED SPLICE**

MATERIAL: EZ TPO P&S

ACCEPTABLE SYSTEMS: ADHERED

MAXIMUM WARRANTY: 20 Years

ISSUE / REVISION DATE:  
**04/20/2026**

DETAIL NO.  
**EZT-PS-T-08**

GENFLEX: (800) 443-4272 www.genflex.com

NOT TO SCALE