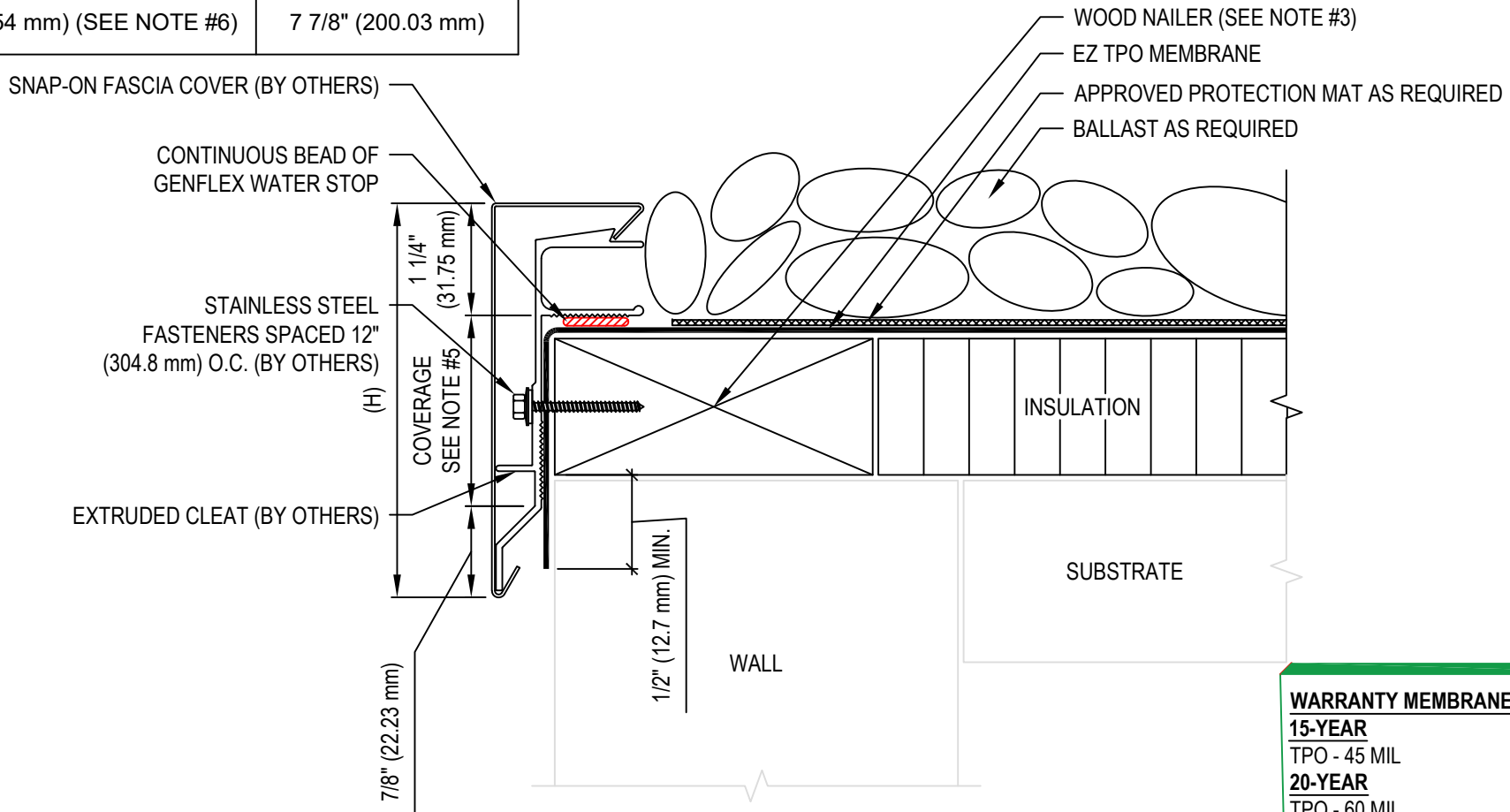


METAL SNAP-ON FASCIA DIMENSIONS

(H)	COVERAGE
4" (101.6 mm)	2 3/4" (69.85 mm)
5 1/2" (139.7 mm)	4 1/4" (107.95 mm)
7" (177.8 mm)	5 3/4" (146.05 mm)
8 1/2" (215.9 mm)	7 1/4" (184.15 mm)
10" (254 mm) (SEE NOTE #6)	7 7/8" (200.03 mm)

NOTE:

1. REFER TO THE GENFLEX™ WEBSITE FOR MOST CURRENT INFORMATION.
2. REFER TO MANUFACTURER'S INFORMATION FOR FASCIA SIZES, ACCESSORIES, AND FINISHES AVAILABLE.
3. WOOD NAILER MUST BE INSTALLED TO MEET APPLICABLE BUILDING CODES.
4. MINIMUM 3 1/2" (88.9 mm) WIDE SPLICE PLATES REQUIRED AT JOINTS.
5. TYPICALLY COVERAGE SHOULD EXTEND A MIN. OF 1 1/2" (38.1 mm) BELOW WOOD BLOCKING IF APPLICABLE.



WARRANTY MEMBRANE REQUIREMENTS:
15-YEAR
 TPO - 45 MIL
20-YEAR
 TPO - 60 MIL



EZ TPO ROOF EDGE WITH SNAP-ON FASCIA AND EXTRUDED CLEAT - BALLASTED

MATERIAL: EZ TPO

ACCEPTABLE SYSTEMS: ALL

MAXIMUM WARRANTY: 20 Years

ISSUE / REVISION DATE:

04/20/2026

DETAIL NO.

EZT-RE-03

GENFLEX: (800) 443-4272 www.genflex.com

NOT TO SCALE