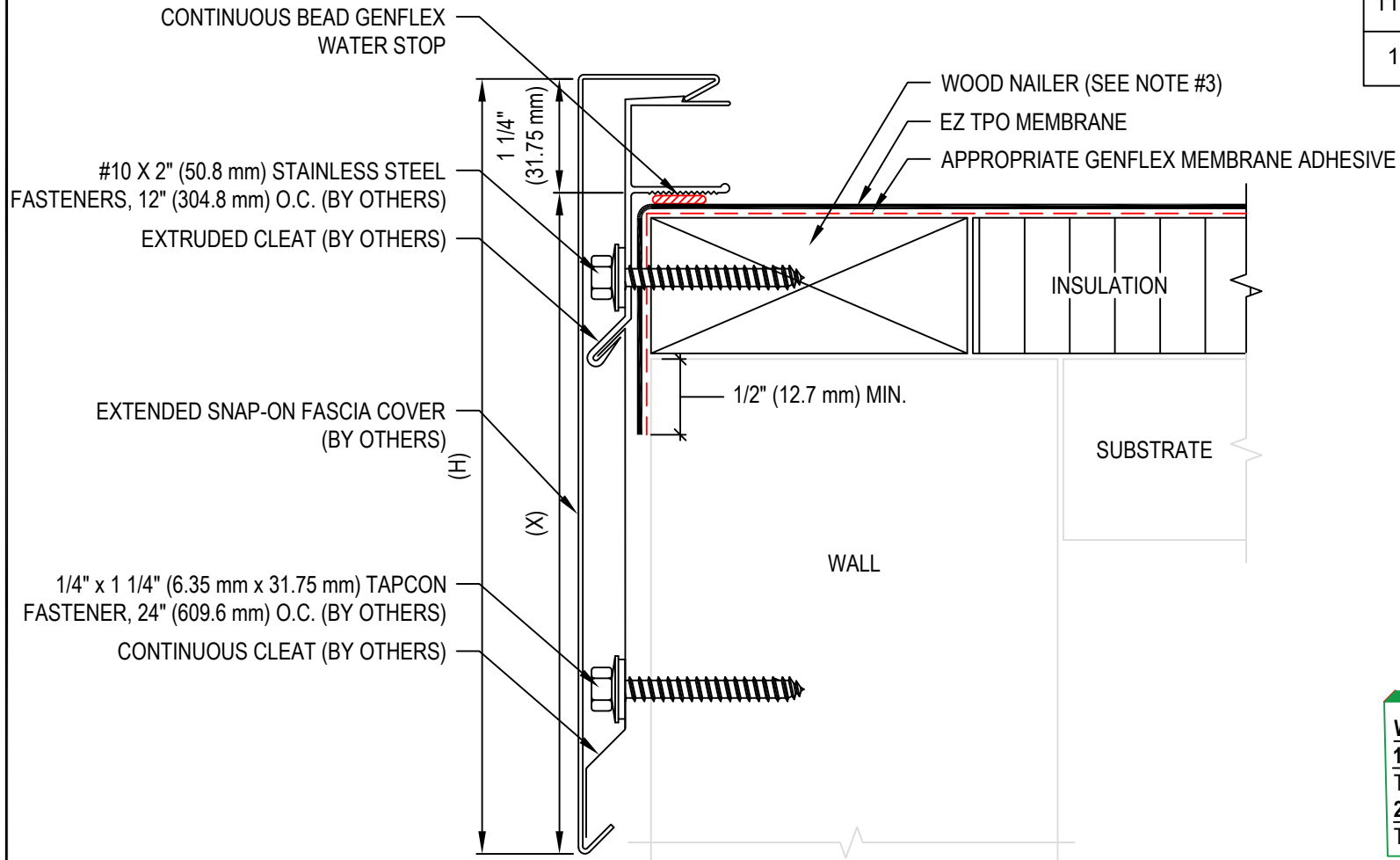


- NOTE:
1. REFER TO THE GENFLEX™ WEBSITE FOR MOST CURRENT INFORMATION.
  2. REFER TO MANUFACTURER'S INFORMATION FOR FASCIA SIZES, ACCESSORIES, AND FINISHES AVAILABLE.
  3. WOOD NAILER MUST BE INSTALLED TO MEET APPLICABLE BUILDING CODES.
  4. MINIMUM 3 1/2" (88.9 mm) SPLICE PLATES REQUIRED AT ALL JOINTS
  5. MECHANICALLY ATTACHED SYSTEMS REQUIRE THE INSTALLATION OF AN APPROPRIATE PERIMETER SECUREMENT USING ANCHOR STRIPS AND FASTENERS THAT ARE STRIPPED IN, MAX 12" (304.8 mm) FROM PERIMETER EDGE

METAL FASCIA DIMENSIONS	
(H)	(X)
8 1/2" (215.9 mm)	7 1/4" (184.15 mm)
10" (254 mm)	8 3/4" (222.25 mm)
11 1/2" (292.1 mm)	10 1/4" (260.35 mm)
1'-1" (330.2 mm)	11 1/4" (285.75 mm)



**WARRANTY MEMBRANE REQUIREMENTS:**  
**15-YEAR**  
 TPO - 45 MIL  
**20-YEAR**  
 TPO - 60 MIL



**EZ TPO ROOF EDGE WITH EXTENDED  
 SNAP-ON FASCIA AND EXTRUDED CLEAT**

MATERIAL: EZ TPO      ACCEPTABLE SYSTEMS: ALL

MAXIMUM WARRANTY: 20 Years

ISSUE / REVISION DATE:  
 12/18/25

DETAIL NO.  
**EZT-RE-05**