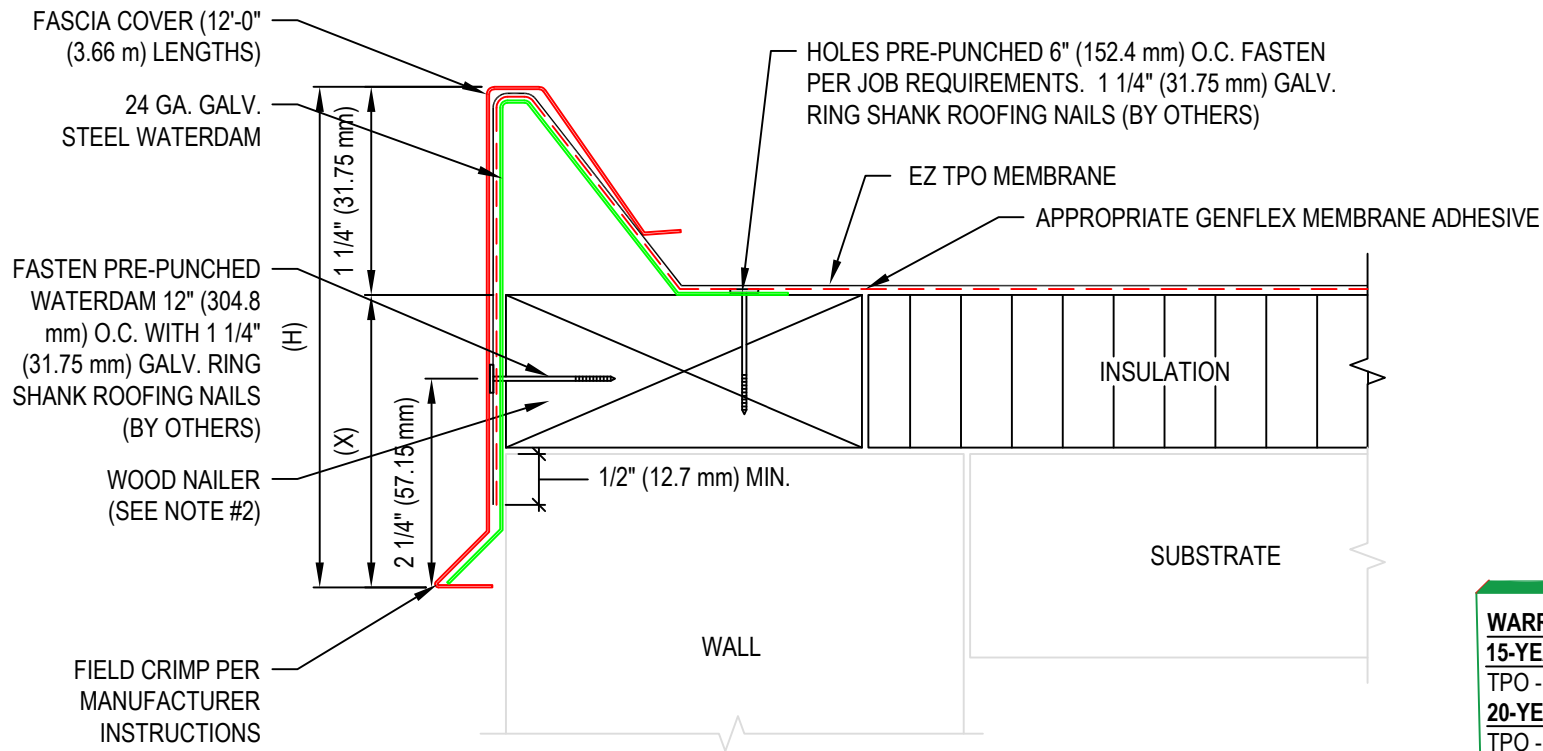


## CANTED METAL EDGE

**NOTE:**

1. REFER TO THE GENFLEX™ WEBSITE FOR MOST CURRENT INFORMATION.
2. WOOD NAILER MUST BE INSTALLED TO MEET APPLICABLE BUILDING CODES.
3. FLANGE OF METAL MUST BE FULLY SUPPORTED BY WOOD AND TERMINATED AT LEAST 1/2" (13 mm) FROM EDGE OF WOOD.
4. MINIMUM 3 1/2" (88.9 mm) WIDE SPLICE PLATE REQUIRED AT JOINTS.
5. STANDARD FASCIA WILL NOT FUNCTION WITH TPO STRIP IN MEMBRANE THICKER THAN 60 MIL. SEE DETAIL EZT-RE-09.
6. OIL CANNING CAN OCCUR ON LARGER FACE HEIGHTS. MINIMUM OF 0.050" (1.27 mm) OR 0.063" (1.6 mm) THICK MATERIAL RECOMMENDED FOR FACE HEIGHTS ABOVE 8" (203.2 mm).
7. WELDED ACCESSORIES REQUIRE A MINIMUM OF MATERIAL THICKNESS OF 0.050" (1.27 mm).

(H)	(X)	NAILER COVERAGE
5" (139.7 mm)	3" (76.2 mm)	1
6 1/2" (165.1 mm)	4 1/2" (114.3 mm)	2
8" (203.2 mm)	6" (152.4 mm)	3
9 1/2" (241.3 mm)	7 1/2" (190.5 mm)	4
11" (279.4 mm)	9" (228.6 mm)	5
1'-0 1/2" (317.5 mm)	10 1/2" (266.7 mm)	6



**WARRANTY MEMBRANE REQUIREMENTS:**  
**15-YEAR**  
 TPO - 45 MIL  
**20-YEAR**  
 TPO - 60 MIL



### CANTED METAL ROOF EDGE WITH CRIMP-ON FASCIA

MATERIAL: EZ TPO

ACCEPTABLE SYSTEMS: ALL

MAXIMUM WARRANTY: 20 Years

ISSUE / REVISION DATE:

04/20/2026

DETAIL NO.

**EZT-RE-07**

NOT TO SCALE