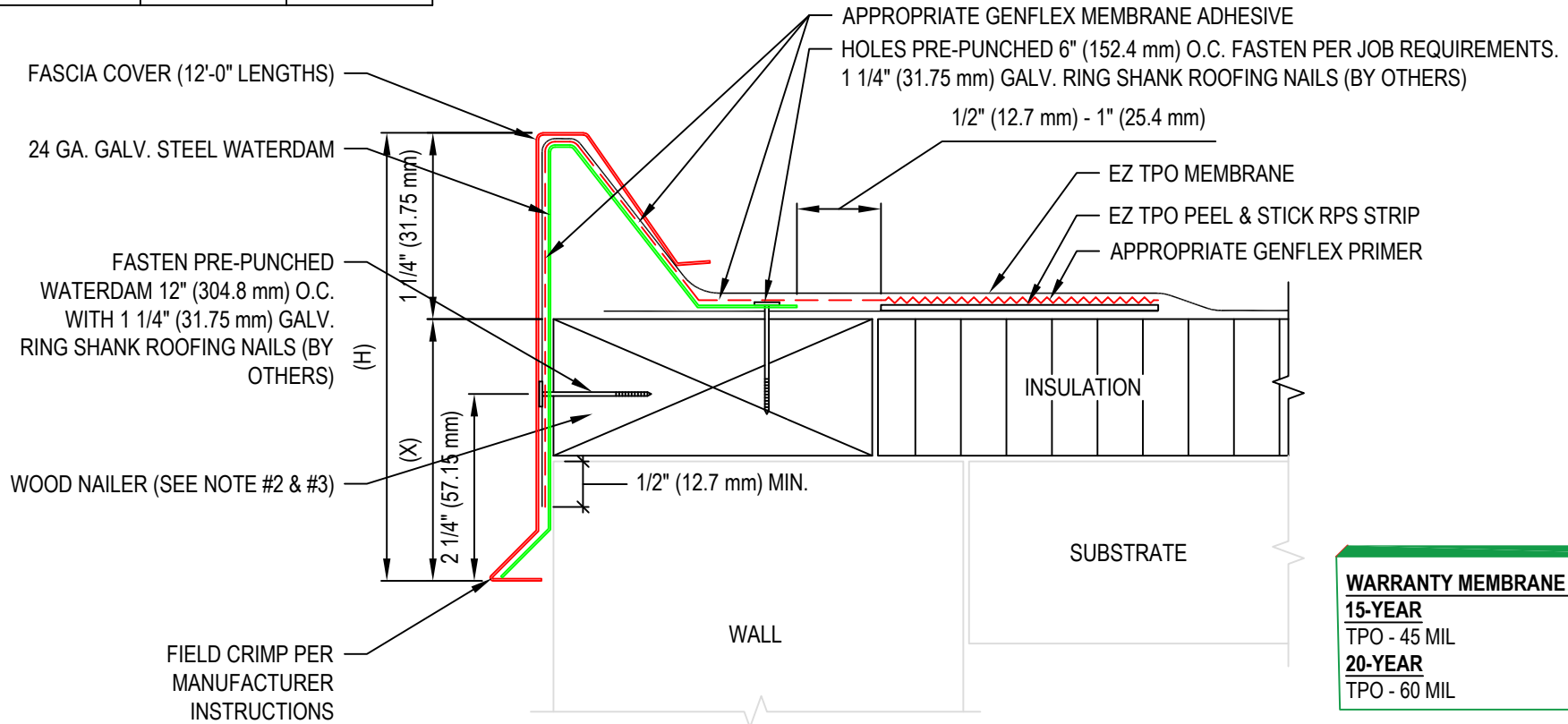


CANTED METAL EDGE

(H)	(X)	NAILER COVERAGE
5"	3"	1
6 1/2"	4 1/2"	2
8"	6"	3
9 1/2"	7 1/2"	4
11"	9"	5
1'-0 1/2"	10 1/2"	6

NOTE:

1. REFER TO THE GENFLEX™ WEBSITE FOR MOST CURRENT INFORMATION.
2. WOOD NAILER MUST BE INSTALLED TO MEET APPLICABLE BUILDING CODES.
3. FLANGE OF METAL MUST BE FULLY SUPPORTED BY WOOD AND TERMINATED AT LEAST 1/2" (12.7 mm) FROM EDGE OF WOOD.
4. MINIMUM 3 1/2" (88.9 mm) WIDE SPLICE PLATE REQUIRED AT JOINTS.
5. STANDARD FASCIA WILL NOT FUNCTION WITH TPO STRIP IN MEMBRANE THICKER THAN 60 MIL. SEE DETAIL EZT-RE-9.
6. OIL CANNING CAN OCCUR ON LARGER FACE HEIGHTS, MINIMUM 0.050" OR 0.063" THICK MATERIAL RECOMMENDED FOR FACE HEIGHTS ABOVE 8" (203.2 mm).
7. WELDED ACCESSORIES REQUIRE A MINIMUM OF MATERIAL THICKNESS OF 0.050".



WARRANTY MEMBRANE REQUIREMENTS:
15-YEAR
 TPO - 45 MIL
20-YEAR
 TPO - 60 MIL



**CANTED METAL ROOF EDGE WITH CRIMP-ON FASCIA
 USING AN EZ TPO PEEL & STICK RPS STRIP**

MATERIAL: EZ TPO

ACCEPTABLE SYSTEMS: ALL

MAXIMUM WARRANTY: 20 Years

ISSUE / REVISION DATE:
 04/20/2026

DETAIL NO.

EZT-RE-08

GENFLEX: (800) 443-4272 www.genflex.com

NOT TO SCALE