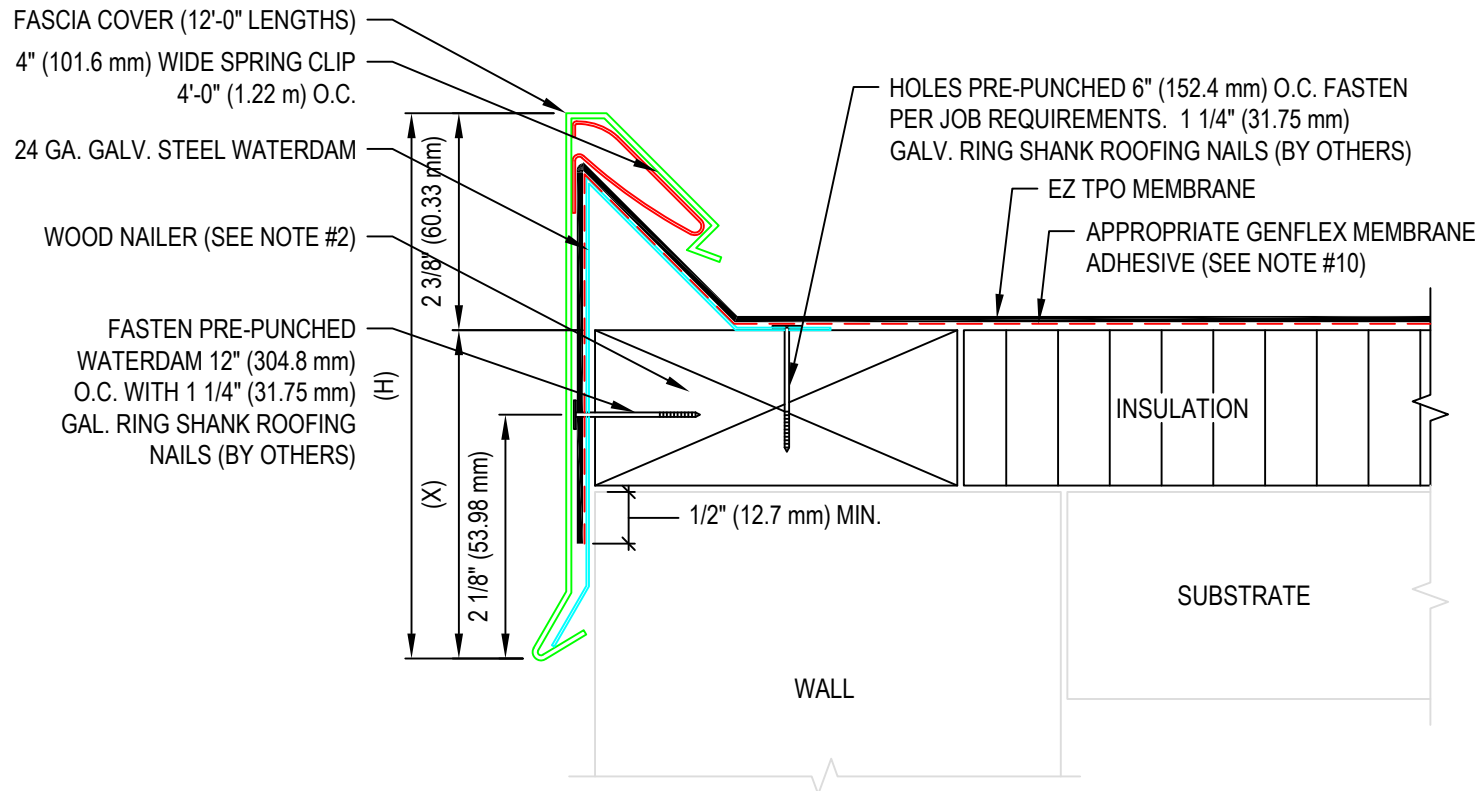


SNAP-ON CANTED EDGE

(H)	(X)	NAILER COVERAGE
5 1/4"	2 7/8"	1
6 3/4"	4 3/8"	2
8 1/4"	5 7/8"	3
9 3/4"	7 3/8"	4
11 1/4"	8 7/8"	5
1'-0 3/4"	10 3/8"	6

NOTE:

1. REFER TO THE GENFLEX™ WEBSITE FOR MOST CURRENT INFORMATION.
2. WOOD NAILER MUST BE INSTALLED TO MEET APPLICABLE BUILDING CODES.
3. FLANGE OF METAL MUST BE FULLY SUPPORTED BY WOOD AND TERMINATED AT LEAST 1/2" (12.7 mm) FROM EDGE OF WOOD.
4. MINIMUM 3 1/2" (88.9 mm) WIDE SPLICE PLATE REQUIRED AT JOINTS.
5. STANDARD FASCIA COVER WILL NOT FUNCTION WITH TPO STRIP IN MEMBRANE THICKER THAN 60 MIL. SEE DETAIL EZT-RE-12.
6. OIL CANNING CAN OCCUR ON LARGER FACE HEIGHTS, MINIMUM 0.050" OR 0.063" THICK MATERIAL RECOMMENDED FOR FACE HEIGHTS ABOVE 8 1/4" (209.55 mm).
7. WELDED ACCESSORIES REQUIRE A MINIMUM OF MATERIAL THICKNESS OF 0.050".
8. REFER TO DETAIL EZT-LS-01 OR EZT-LS-02 FOR WELD WIDTH.
9. WHEN REINFORCEMENT OF TPO MEMBRANE IS EXPOSED, REFER TO EZT-LS-14 FOR CUT EDGE SEALANT APPLICATION.
10. APPROPRIATE GENFLEX MEMBRANE ADHESIVE REQUIRED BETWEEN MEMBRANE AND INSULATION FOR ADHERED SYSTEMS. MEMBRANE ADHESIVE REQUIRED BETWEEN METAL DAM AND MEMBRANE FOR ALL SYSTEMS.



WARRANTY MEMBRANE REQUIREMENTS:
15-YEAR
TPO - 45 MIL
20-YEAR
TPO - 60 MIL



CANTED METAL ROOF EDGE - SNAP-ON VERSION

MATERIAL: EZ TPO

ACCEPTABLE SYSTEMS: ALL

GENFLEX: (800) 443-4272 www.genflex.com

MAXIMUM WARRANTY: 20 Years

ISSUE / REVISION DATE:
04/20/2026

DETAIL NO.
EZT-RE-10

NOT TO SCALE