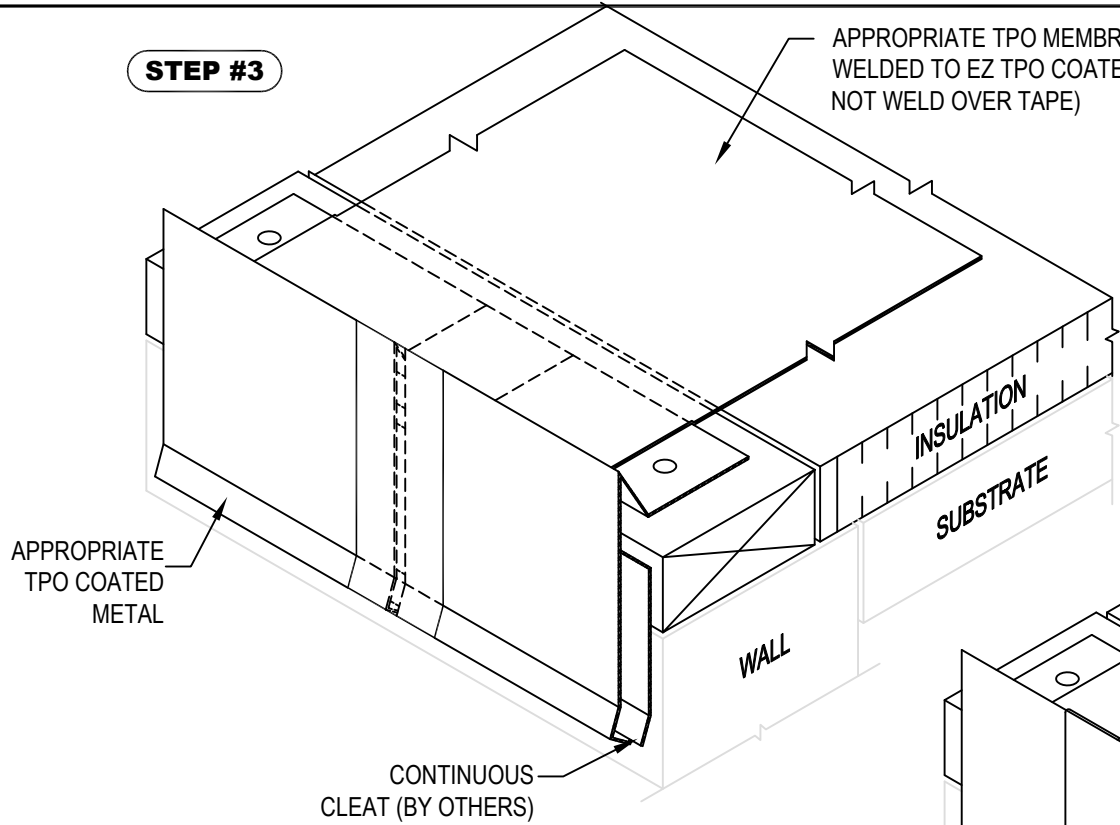
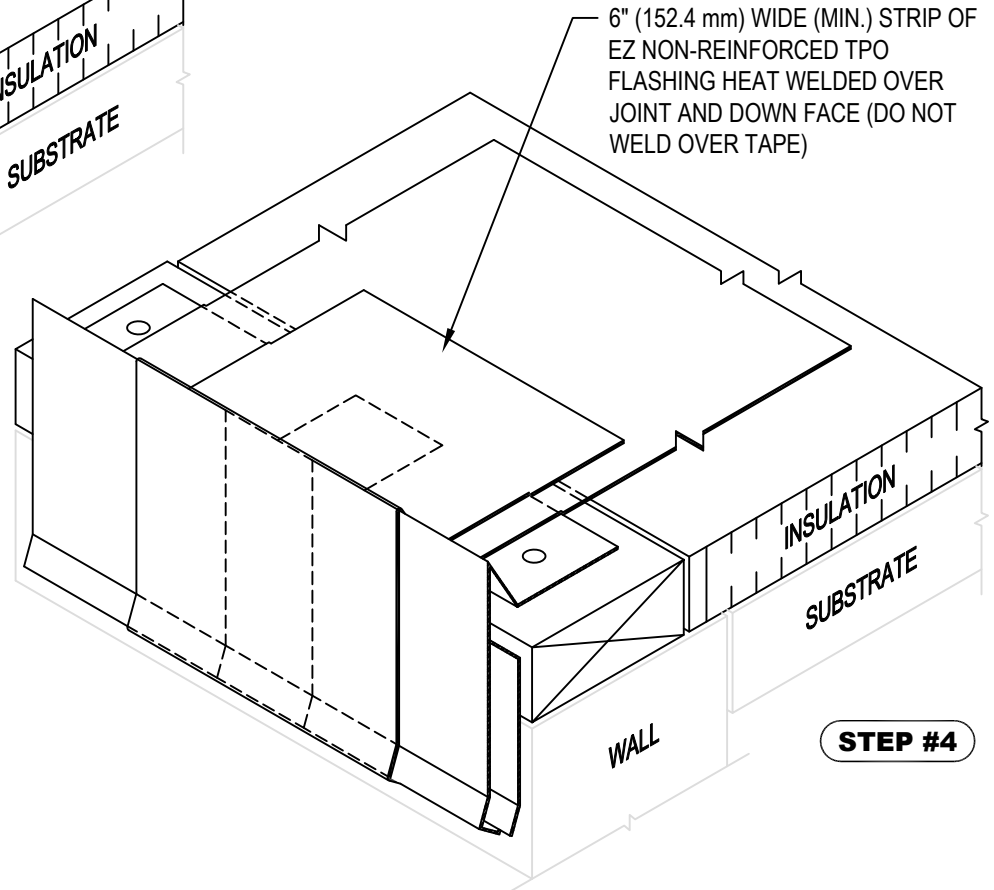


STEP #3



NOTE:

1. REFER TO THE GENFLEX™ WEBSITE FOR THE MOST CURRENT INFORMATION.
2. REFER TO DETAIL EZT-LS-01 OR EZT-LS-02 FOR WELD WIDTH.
3. WHEN REINFORCEMENT OF TPO MEMBRANE IS EXPOSED, REFER TO EZT-LS-14 FOR CUT EDGE SEALANT APPLICATION.



STEP #4

WARRANTY MEMBRANE REQUIREMENTS:
15-YEAR
 TPO - 45 MIL
20-YEAR
 TPO - 60 MIL



**ROOF EDGE SPLICE WITH EZ TPO COATED METAL
 INSTALLATION STEPS 3 & 4**

MATERIAL: EZ TPO

ACCEPTABLE SYSTEMS: ALL

MAXIMUM WARRANTY: 20 Years

ISSUE / REVISION DATE:
 04/20/2026

DETAIL NO.

EZT-RE-23B

NOT TO SCALE

GENFLEX: (800) 443-4272 www.genflex.com