

NOTE:

1. REFER TO THE GENFLEX™ WEBSITE FOR THE MOST CURRENT INFORMATION.
2. TPO EDGE CAULK IS REQUIRED ALONG ENTIRE UPSLOPE EDGE OF PEEL & STICK FLASHING WHEN ROOF SLOPE IS 1" (25.4 mm) PER FOOT OR GREATER.
3. WOOD NAILER MUST BE INSTALLED TO MEET APPLICABLE BUILDING CODES.
4. FLANGE OF METAL MUST BE FULLY SUPPORTED BY WOOD AND TERMINATED AT LEAST 1/2" (12.7 mm) FROM EDGE OF WOOD.
5. TO ENSURE FORMABILITY, SLIGHTLY HEAT-FORM THE SURFACE OF TPO PEEL & STICK PRODUCTS AT STEP-OFFS AND ANGLE CHANGES.
6. REQUIRED - APPLY EDGE CAULK ALONG THE ENTIRE PERIMETER OF THE T-JOINT COVER AND EXTEND A MIN. 3" (76.2 mm) PAST OVERLAPS IN EACH DIRECTION.
7. TPO PEEL & STICK FLASHING MUST EXTEND TO WITHIN 1/4" (6.35 mm) OF THE METAL EDGE AND COVER FASTENERS BY A MINIMUM OF 2" (50.8 mm).
8. OPTIONAL - TPO EDGE CAULK MAY BE APPLIED ALONG ENTIRE PERIMETER OF PEEL & STICK FLASHING (SEE NOTE #2).
9. REQUIRED - APPLY TPO EDGE CAULK AT ALL PEEL & STICK LAPS.

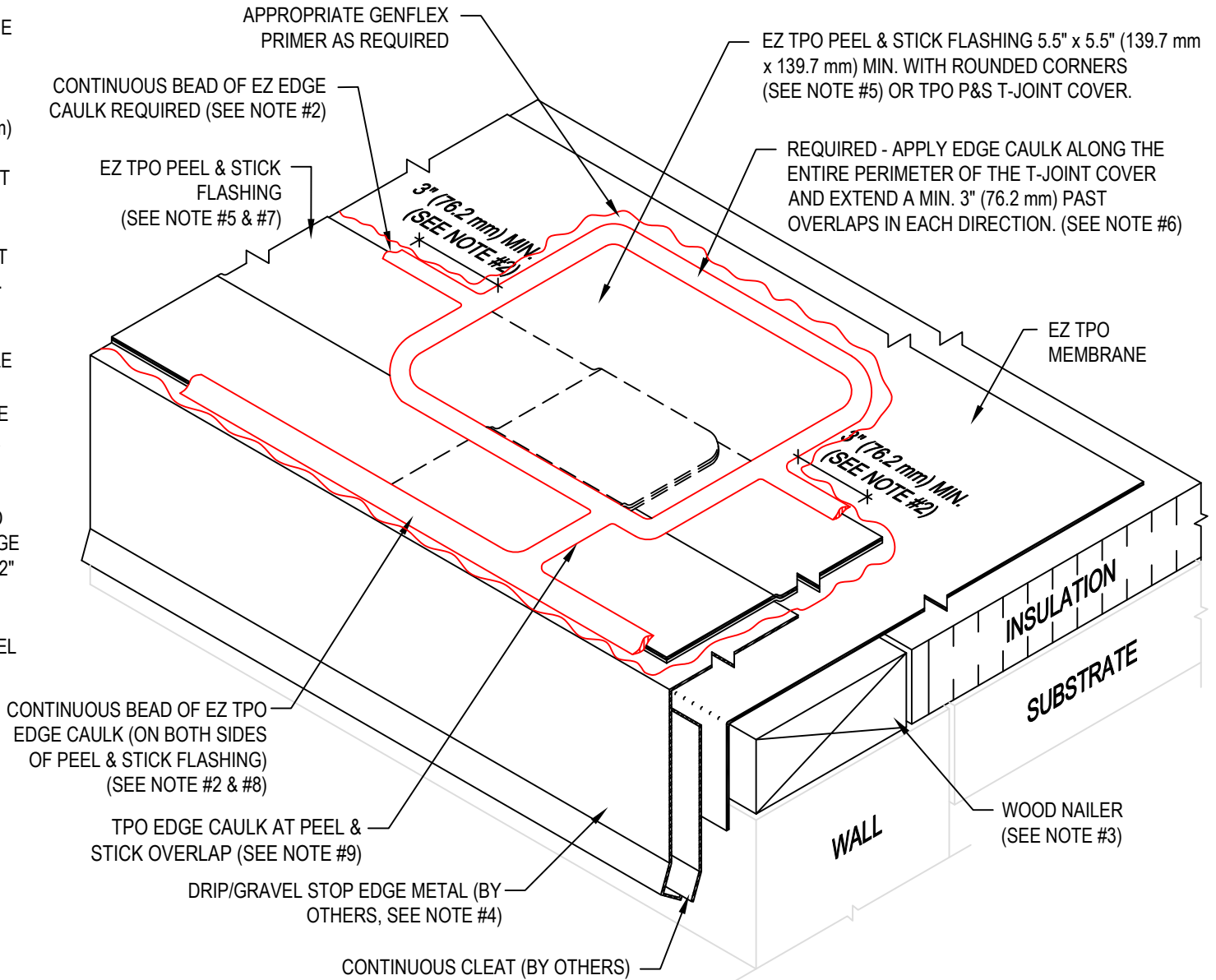
WARRANTY MEMBRANE REQUIREMENTS:

15-YEAR

TPO - 45 MIL

20-YEAR

TPO - 60 MIL



ROOF EDGE WITH TPO PEEL & STICK FLASHING - END SPLICE OVERLAP

MATERIAL: EZ TPO

ACCEPTABLE SYSTEMS: ALL

MAXIMUM WARRANTY: 20 Years

ISSUE / REVISION DATE:

04/20/2026

DETAIL NO.

EZT-RE-24

NOT TO SCALE