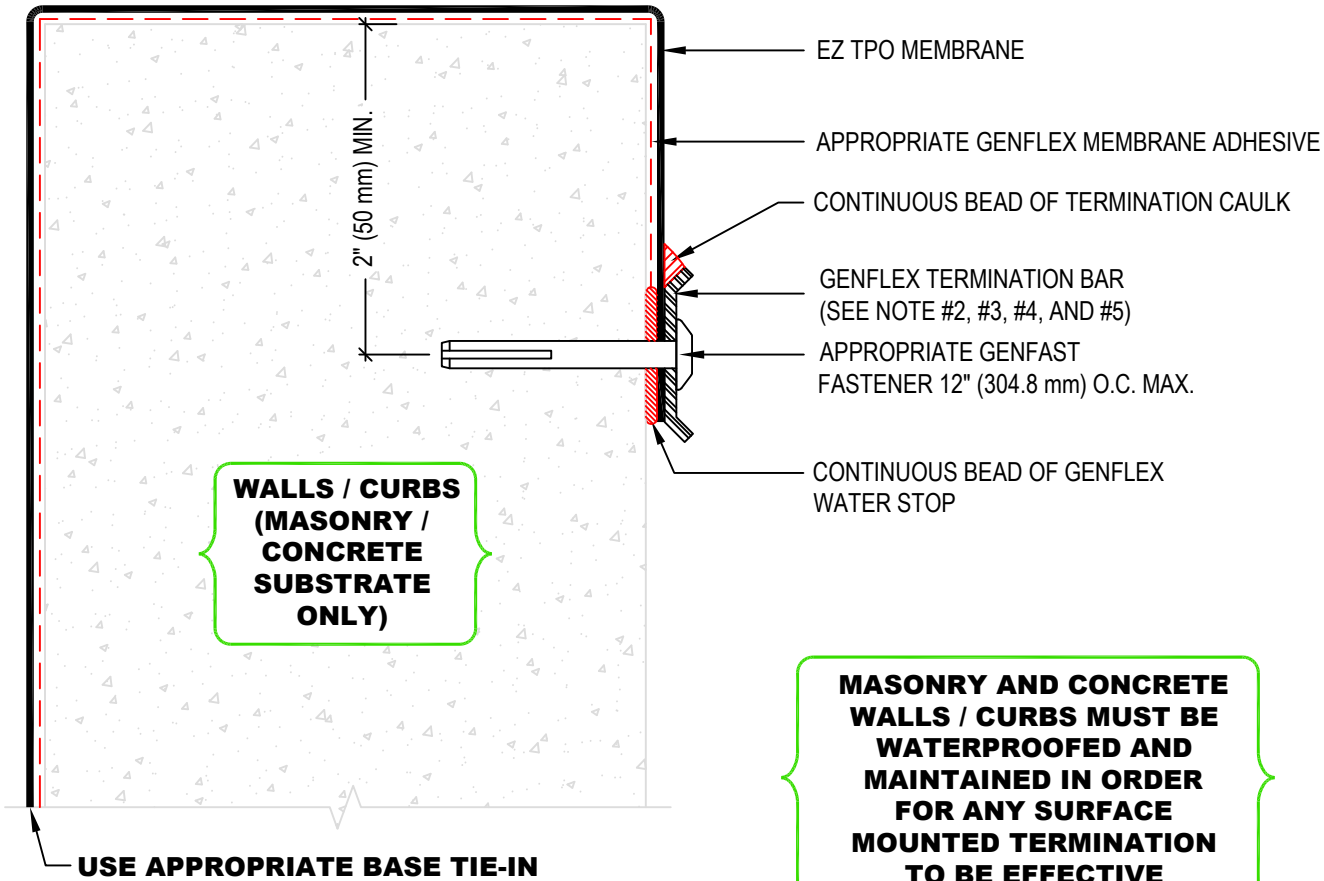


NOTE:

1. REFER TO THE GENFLEX™ WEBSITE FOR MOST CURRENT INFORMATION.
2. INSTALL GENFLEX TERMINATION BAR WITH 1/4" (6.35 mm) GAP BETWEEN ADJOINING SECTIONS.
3. TERMINATION BAR MUST BE CUT AT INSIDE AND OUTSIDE CORNERS. **DO NOT BEND AROUND CORNERS.**
4. TERMINATION BAR MUST BE FASTENED WITHIN 1" (25.4 mm) MAX. OF ALL SECTION ENDS.
5. FOR SINGLE LIP TERMINATION BARS, ENSURE THAT THE TOP LIP FACES UPWARD.



**WALLS / CURBS
(MASONRY /
CONCRETE
SUBSTRATE
ONLY)**

**MASONRY AND CONCRETE
WALLS / CURBS MUST BE
WATERPROOFED AND
MAINTAINED IN ORDER
FOR ANY SURFACE
MOUNTED TERMINATION
TO BE EFFECTIVE**

WARRANTY MEMBRANE REQUIREMENTS:
15-YEAR
 TPO - 45 MIL
20-YEAR
 TPO - 60 MIL



**TERMINATION ON OUTSIDE OF PARAPET WALL
WITH GENFLEX TERMINATION BAR**

MATERIAL: EZ TPO

ACCEPTABLE SYSTEMS: ALL

MAXIMUM WARRANTY: 20 Years

ISSUE / REVISION
DATE:

04/20/2026

DETAIL NO.

EZT-T-02

NOT TO SCALE