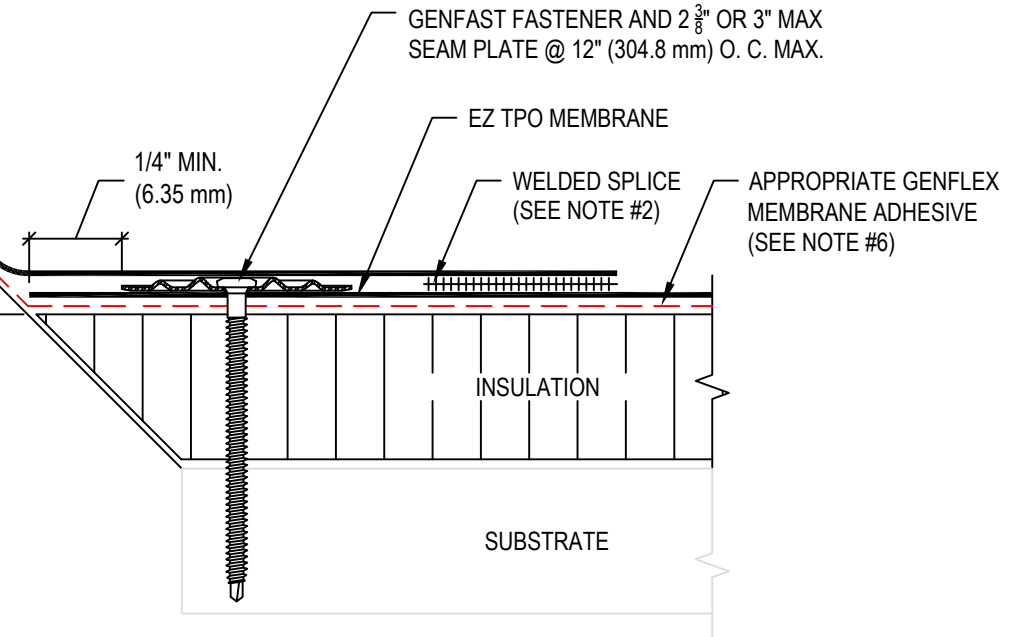


- NOTE:
1. REFER TO THE GENFLEX™ WEBSITE FOR MOST CURRENT INFORMATION.
 2. REFER TO DETAIL EZT-LS-01 OR EZT-LS-02 FOR WELD WIDTH.
 3. MAXIMUM 10" (254 mm) LONG FASTENERS.
(NOTE: WOOD BLOCKING MAY BE SUBSTITUTED FOR INSULATION TO REDUCE FASTENER LENGTH REQUIREMENT).
 4. APPROPRIATE GENFLEX MEMBRANE ADHESIVE REQUIRED BETWEEN MEMBRANE AND INSULATION FOR ADHERED SYSTEMS.
 5. CONTACT GENFLEX TECHNICAL SERVICES FOR BALLASTED SYSTEMS.
 6. WHEN REINFORCEMENT OF TPO MEMBRANE IS EXPOSED, REFER TO EZT-LS-14 FOR CUT EDGE SEALANT APPLICATION.
 7. INSTALL METAL WORK IN ACCORDANCE WITH CURRENT SMACNA RECOMMENDATIONS.
 8. GENFLEX DOES NOT WARRANT TIE-INS TO OTHER ROOFING SYSTEMS. THIS DETAIL INCLUDES TERMINATION OF THE GENFLEX SYSTEM ONLY.
 9. IT IS IMPORTANT THAT THE SHINGLE UNDERLAYMENT DOES NOT MAKE CONTACT WITH THE GENFLEX TPO MEMBRANE.

WARRANTY MEMBRANE REQUIREMENTS:
15-YEAR
 TPO - 45 MIL
20-YEAR
 TPO - 60 MIL



TERMINATION AT SHINGLES	
MATERIAL: EZ TPO	ACCEPTABLE SYSTEMS: ALL

MAXIMUM WARRANTY: 20 Years	
ISSUE / REVISION DATE: 04/20/2026	DETAIL NO. EZT-T-20
NOT TO SCALE	

GENFLEX: (800) 443-4272 www.genflex.com