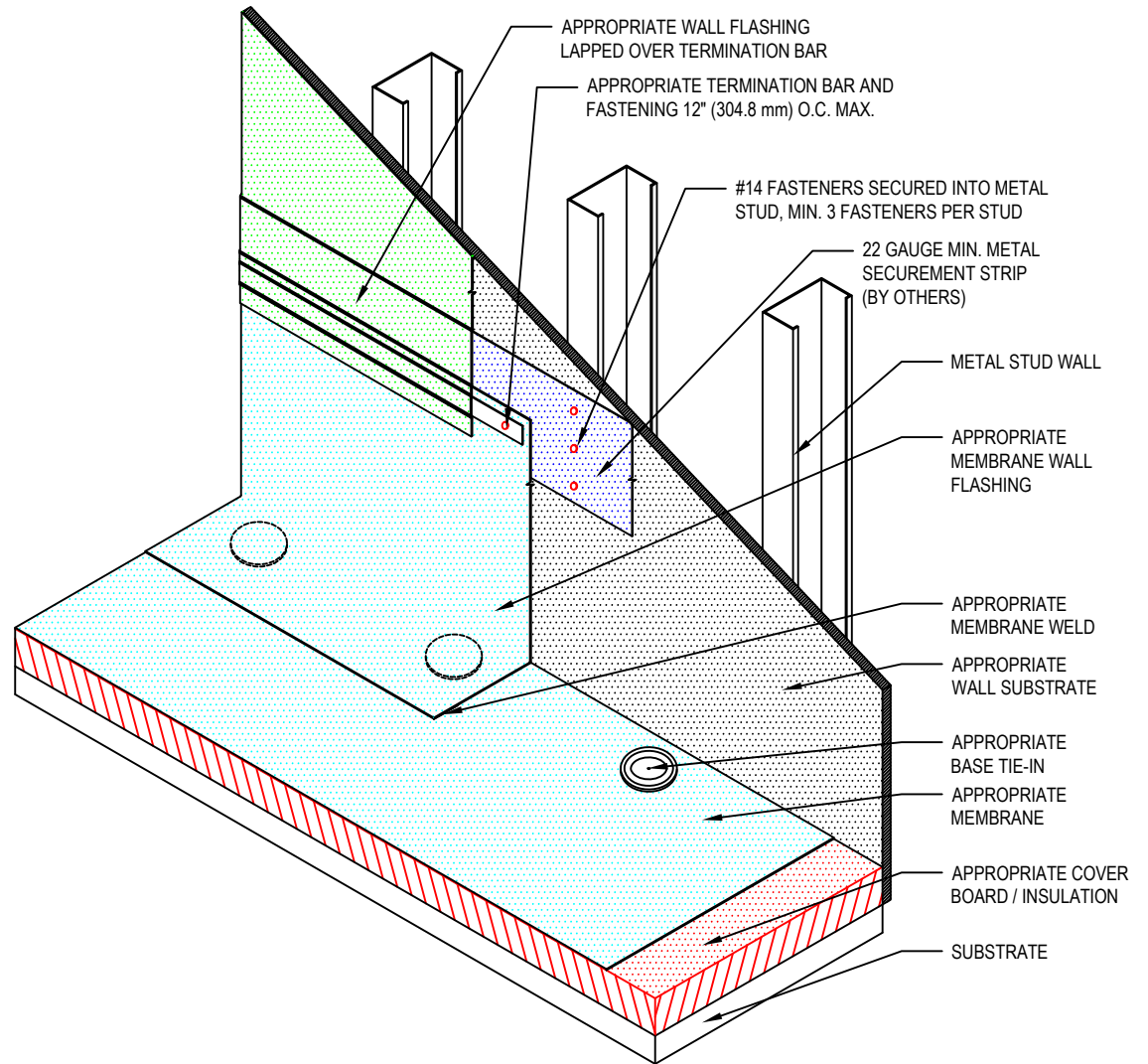


NOTE:

1. REFER TO THE GENFLEX™ WEBSITE FOR MOST CURRENT INFORMATION.
2. IF INTERMEDIATE ATTACHMENT IS REQUIRED, COMPLETE AS FOLLOWS:
 - UP TO 3' (0.91 m) WALL HEIGHT- NONE REQUIRED
 - ABOVE 3' (0.91 m) - ONE ATTACHMENT EVERY 3' (0.91 m)
3. WALL SUBSTRATE MUST BE MATERIAL APPROPRIATE TO RECEIVE MEMBRANE ADHESIVE.
4. IN SITUATIONS WHERE IT IS ADVANTAGEOUS TO MOUNT THE INTERMEDIATE SECUREMENT HORIZONTALLY THAT INVOLVES A NON-STRUCTURAL SUBSTRATE A 22 GA (0.76 mm) METAL SECUREMENT STRIP MAY BE SECURED THROUGH THE NON-STRUCTURAL SUBSTRATE TO THE METAL STUDS BEFORE THE FLASHING IS APPLIED TO SERVE AS A POINT OF ANCHORAGE FOR THE INTERMEDIATE MEMBRANE SECUREMENT.
5. METAL STUD MOUNTED SHEATHING APPLICATIONS USING OTHER THAN PLYWOOD OR OSB THAT ARE ACCEPTABLE TO BOND DIRECTLY TO MEMBRANE INCLUDE: 1/2" (13 mm) OR GREATER DENSDECK PRIME (NOT DENSGLASS GOLD), EXTERIOR EXPOSURE FACED GYPSUM BOARD IN 1/2" (12.7 mm) OR GREATER THICKNESS, ETC.
6. METAL STUD MOUNTED PARAPET AND WALL SHEATHING OTHER THAN PLYWOOD OR OSB EXCEEDING 48" (1.22 m) IN HEIGHT REQUIRE VERTICALLY MOUNTED INTERMEDIATE SECUREMENT SPACED AT MOST 48" (1.22 m) APART, SECURED THROUGH THE SHEATHING TO THE METAL STUDS WITH GENFAST #14 AP FASTENERS AND GENFAST METAL ANCHOR BAR AT 12" (304.8 mm) O.C.
7. THE INTERMEDIATE SECUREMENT ANCHOR BARS WILL EXTEND FROM 4" (102 mm) MINIMUM TO 6" (152.4 mm) MAXIMUM FROM THE FINISHED ROOF SURFACE AND 4" (101.6 mm) MINIMUM TO 6" (152.4 mm) MAXIMUM FROM THE METAL COPING OR ANGLE CHANGE AT THE TOP OF THE PARAPET.
8. TERMINATION BAR TO BE STRIPPED-IN WITH APPROPRIATE COVER TAPE.
9. ALL MEMBRANE CUT EDGES MUST BE CAULKED WITH APPROPRIATE CUT EDGE SEALANT.
10. POSITION STRIP CENTERED AT THE POINT WHERE YOU WISH TO MOUNT THE HORIZONTALLY ORIENTED INTERMEDIATE MEMBRANE SECUREMENT.



WARRANTY MEMBRANE REQUIREMENTS:

15-YEAR

TPO - 45 MIL

20-YEAR

TPO - 60 MIL



**INTERMEDIATE WALL FLASHING ATTACHMENT
INTO NON-STRUCTURAL SUBSTRATE**

MATERIAL: EZ TPO

ACCEPTABLE SYSTEMS: ALL

MAXIMUM WARRANTY: 20 Years

ISSUE / REVISION
DATE:

04/20/2026

DETAIL NO.

EZT-T-26

NOT TO SCALE

GENFLEX: (800) 443-4272 www.genflex.com